

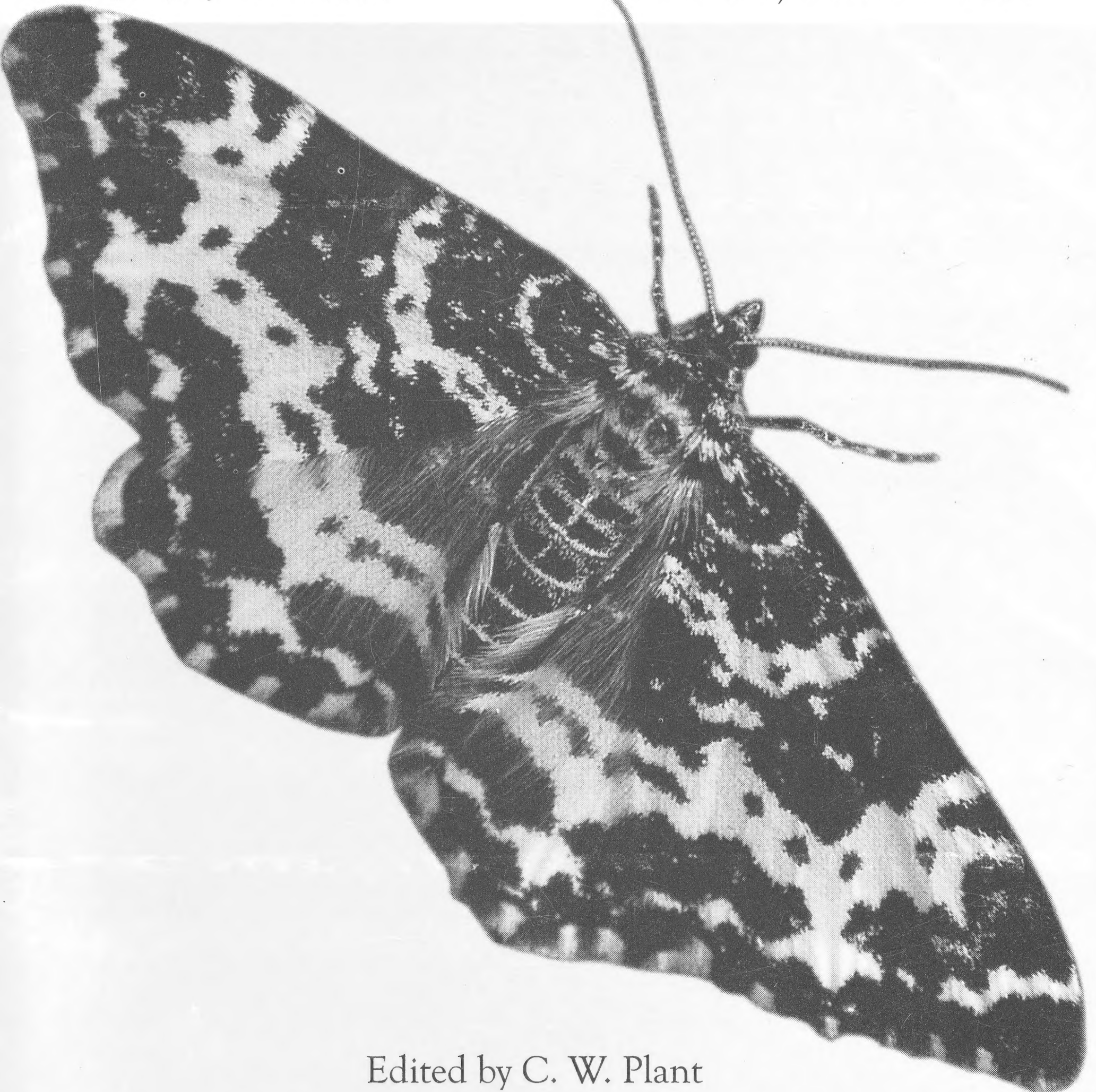
Th ^{QL}
461
E99Z
ENT

Entomologist's Record

and Journal of Variation

Volume 124 • Part 6

November/December 2012

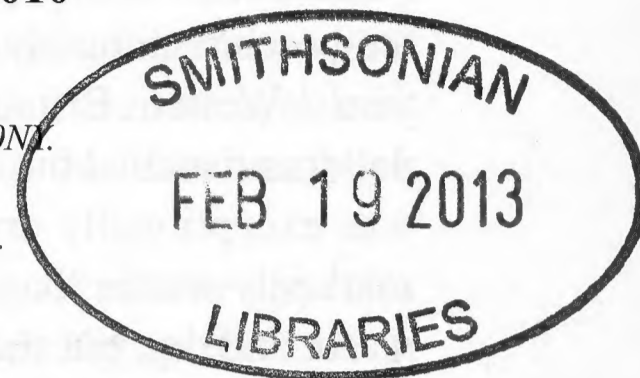


Edited by C. W. Plant

PAUL SOKOLOFF

As we go to press we are very much saddened by the news that Paul Sokoloff, a former Editor of this journal and a highly respected lepidopterist passed away peacefully, in his sleep, on 26 November 2012 after a short battle with cancer. The Editor and Cravitz Printing offer their sincere condolences to Linda, Amanda and Julian at this difficult time.

An obituary is being prepared for publication in the January 2013 issue of this journal and the present Editor invites any contributions and/or anecdotes that might be useful for this purpose at cpauk1@ntlworld.com. These will then be passed to the obituary writer.

MICROLEPIDOPTERA REVIEW OF 2010¹ J. R. LANGMAID AND ² M. R. YOUNG¹ Wilverley, 1 Dorrita Close, Southsea, Hampshire PO4 0NL.
(johnrendle.langmaid@gmail.com)² Meiklepark, Oldmeldrum, Aberdeenshire AB51 0DL.
(m.young@abdn.ac.uk)**Abstract**

Noteworthy records of microlepidoptera collected during 2011 are summarised, including five species new to the British Isles and numerous new vice-county records.

Introduction

2011 was another year without a warm and settled summer but, despite this, numerous new records have been submitted to us and there are five species newly recorded in the British Isles. December 2010 was exceptionally cold but, thereafter, January and February 2011 were nearer to the long-term average, especially in the south-east of England. Overall the mid to late winter was distinctly colder than usual in Northern Ireland, south-west Scotland and the central Highlands and just slightly colder than normal elsewhere. Sunshine levels were slightly above average in the colder areas but the weather was generally rather cloudy and dull in the south and east of England, where rainfall was around normal. In central and south west England, Wales and northern and western Scotland, however, there was much less rain than expected, leading towards a drought, especially in central England.

The spring in 2011 was generally much warmer than the long-term average and this applied particularly to April, which was the warmest for a hundred years, particularly in the east. March and May were nearer to normal but overall the spring was warm and dry, which led to early emergences and some confusion about whether moths and their food-plants were synchronised in their appearance. Sunshine levels matched the increased temperatures, but a much more worrying and marked trend was for the amount of rainfall to be very low indeed, especially in south-east England, deepening the already serious drought. In contrast, north-west Scotland was wetter than usual, so that the usually dry and sunny May in the Hebrides and western Highlands did not happen.

Fortunately, the drought in the south-east was eased somewhat by above average rainfall from June to August, although the English Midlands were nearer to normal in this respect. Unfortunately eastern Scotland, which was not experiencing a drought, and so did not need excess rainfall, was very wet indeed! Over the whole of the UK temperature and sunshine levels were distinctly below average, particularly in July and August, so that it was the coolest and dullest summer for at least twenty years. This undoubtedly reduced moth catches in the main summer period and this was particularly disappointing after the warm and promising spring.

Autumn 2011 was then generally warmer and sunnier than average, with a very warm spell in late September, extending into early October, and a noticeably mild

November. This applied particularly to the east of the UK, with the highest temperature anomaly in the east-central Midlands of England, the warmest for 350 years! Western Britain was also warmer than average but only slightly so. Rainfall patterns matched but emphasised the temperature differentials. South-east England was exceptionally dry, whereas Northern Ireland and west-central Scotland were markedly wetter than usual. A year in which the spring and autumn are unusually warm and dry, but the main summer period is disappointingly wet and cool, might be expected to be very difficult for moths and our recorders certainly reported a poor season, with rather few moths flying and times of appearance uncertain. Even so, we are delighted to include many new vice-county records.

In 2011 the process of preparing a new Lepidoptera checklist for the British Isles was begun, based on the nomenclature and taxonomic arrangement of species, genera and families currently used in Europe as published in *Fauna Europaea*. This will prove to be very unfamiliar to most UK lepidopterists, with many changes to names and some seemingly unlikely re-assignments of species groups. Regardless of these controversial changes, there is no doubt that a new checklist is needed, as the current one, prepared by John Bradley in 2000 (Bradley, J.D., 2000 *Checklist of Lepidoptera recorded from the British Isles* 2nd Edition (revised)), is now very incomplete and out-dated. Even so, it has been a very popular and easily-used list and will be sadly missed, with its now familiar code numbers.

We have continued to use Bradley's list as the basis for this Annual Review, so that readers can easily and certainly understand which species are being referred to. The only exceptions relate to species added to the UK list since 2000, (such as *Syncopacma albifrontella* (Hein.)); names shown to be definitely erroneous and so needing immediate correction, (such as the replacement of *Blastobasis lignea* Wals. with *B. adustella* Wals.); and a small number of names which have resulted from a re-examination of the status of supposed sub-species, or the realisation that two species have been sheltering under one name, (such as the subdivision of *Acleris emargana* (Fabr.) to include *A. effractana* (Hübner)). These few exceptions to Bradley's list have all been prominently published in the British literature and so should be familiar (see for example Langmaid J.R. & Agassiz D.J.L, 2005, Changes in the names of British Microlepidoptera. *Entomologist's Rec. J. Var.* **117**: 143-147). We have deliberately NOT included piecemeal changes associated with the gradual consideration of the changes suggested in Europe, so that the Review remains familiar and unambiguous.

This will have to change once the new checklist is published, possibly in late 2012. It is sponsored by the Royal Entomological Society and, like it or not, will become the new standard until any substantive revision is agreed. Readers will be aware that the new names and taxonomic order are already being used in recently published books, such as Clancy, S., Top-Jensen, M. and Fibiger, M (2012) *Moths of Great Britain and Ireland*, BugBook Publishing, and Sterling, P., Parsons, M. and Lewington, R (2012) *Field Guide to the Micro-moths of Great Britain and Ireland*,

British Wildlife Publishing. The new micro guide is already a standard text, likely to encourage much more attention for micro recording, but many of the names that it uses may be unfamiliar and unfortunately will not match those used here, at least for this year. As it has been published in 2012, we will refer to this excellent book more fully in next year's Review.

It is likely that extra recording effort has led to the discovery of nine new species to Wales, although one or two may now be found there following an increase in range, for example *Cochylis molliculana* Zell.. The same applies in Ireland, where most of the five new species may be long overlooked residents but *Argyresthia trifasciata* Staud. may be a colonist. However, all four of the new Scottish species seem likely to have been previously overlooked. It seems that there have been no species recorded as new to England, having been previously found in other parts of the British Isles, but there are five species that are completely new. Two may well have been introduced as part of the horticultural trade, namely *Bucculatrix chrsyanthemella* Rebel, 1896, which comes from the Canary Islands and whose larvae feed on various garden 'daisies', and *Pseudococcyx tessulatana* (Staudinger, 1871) usually found in southern Europe, associated with *Cupressus* and other conifers. Similarly *Harpella forficella* (Scopoli, 1763) may have been transported here in dead wood. However, *Elegia fallax* (Staudinger, 1881), an oak feeder from central and southern Europe, may have strayed here and has also once been found on Guernsey; and *Gravitarmata margarotana* (Heinemann, 1863) may be a recently established, or overlooked, resident in conifer woods in Kent. On the Continent it is found up to many parts of north-west Europe. How exciting that five entirely new species should be recorded, even in a poor year like 2011.

Please may we now ask for many more records from 2012, arranged in our standard format and with a national grid reference, and the easiest way for us to receive these is as a **WORD file** to **JRL**. **Please do not submit records in spreadsheets**, as these then require extensive editing, adding enormously to the task of preparing the review. Thank you to so many enthusiasts whose records make this such an extensive and important contribution and especially to Ian Thirlwell for help with the tedious task of checking and collating the new records.

The 2011 records have come from the following recorders, each indicated in the text by his or her initials. Other recorders are named in full. M.V. Albertini, A.M. Banthorpe, M.G. Banthorpe, T.J. Barker, H.E. Beaumont, S.D. Beavan, D.T. Biggs, K.P. Bland, K.G.M. Bond, T. Bryant, P.J. Clarke, V.F. Clarke, G.A. Collins, M.F.V. Corley, P.D.M. Costen, M.G. Cubitt, D.W.W. Davidson, A.M. Davis, B. Dickerson, R.J. Dickson, I.D. Ferguson, J.B. Formstone, D.C. Gardner, R.G. Gaunt, R. Goodey, A.N. Graham, J.E. Graham, M.J. Gray, P.R. Hall, M.W. Harper, M.C. Harvey, R.J. Heckford, B.P. Henwood, J. Higgott, S.H. Hind, D. Hodggers, S.A. Knill-Jones, J.R. Langmaid, A.D. Lewis, N.R. Lowe, D.V. Manning, D. Monk, K.A.Naylor, E. O'Donnell, S.M. Palmer, M.S. Parsons, C.W. Plant, J. Porter, C.R. Pratt, A.W. Prichard, K. Regan, S.A. Rolls, E. Rolston, A.P.Russell, J. Seawright, A.N.B.

Simpson, D.J. Slade, E.G. Smith, I.F. Smith, M.H. Smith, P.H. Sterling, N.J. Stone, T.J. Tams, G.M. Tordoff, L.A.C. Truscott, M.J. Wall, J.R. Wheeler, P.R. Williams, N. Winterman, M.R. Young.

New vice-county records are shown with the VC number both underlined and in **bold** type. Journals are abbreviated as follows: *Ent. Rec.* for *Entomologist's Record and Journal of Variation*; *Ent. Gaz.* for *Entomologists' Gazette*; *BJENH* for *British Journal of Entomology and Natural History*; and *Atropos* is named in full. RIS refers to the Rothamsted Insect Survey and VCH to Victoria County History.

SYSTEMATIC LIST

MICROPTERIGIDAE

- 1 *Micropterix tunbergella* (Fabr.) — Llowes SO194419 (**43**) 24.iv.2011 — PJC & VFC
- 4 *M. aruncella* (Scop.) — Townfoot Farm NX999679 (**72**) 25.vi.2011 — A. Robertson *per* KAN
- 5 *M. calthella* (Linn.) — Myroch Point, Luce Bay NX124416 (**74**) 13.vi.2011 — P. Norman *per* KAN

ERIOCRANIIDAE

- 8 *Eriocrania unimaculella* (Zett.) — Hinderclay TM0278 (**26**) tenanted mine on *Betula* sp. 30.iv.2011 — AWP; Torrs Warren NX1456 (**74**) tenanted mines on *Betula* sp. 29.iv.2011 — K. McCabe *per* KAN
- 10 *E. salopiella* (Staint.) — Turville Heath SU7491 (**24**) vacated mines on *Betula pendula* 11.vi.2011 — JRL & Bucks Moth Group
- 11 *E. cicatricella* (Zett.) — Marford Quarry SJ358560 (**50**) tenanted mine on *Betula* sp. 26.iv.2011 — ANG & JEG
- 12 *E. sangii* (Wood) — Llowes SO191420 (**43**) tenanted mine on *Betula* sp 20.iv.2011 — PJC & VFC; Little Milford Woods SM 965 119 (**45**) tenanted mines on *Betula* sp. 20.iv.2011 — R. Taylor *per* ADL; Fenns Moss SJ504370 (**50**) tenanted mine on *Betula* 27 iv 2011 — ANG & JEG; Torrs Warren NX1456 (**74**) tenanted mines on *Betula* sp. 29.iv.2011 — K. McCabe *per* KAN
- 13 *E. semipurpurella* (Steph.) — Cwm Coel, Elan Valley SN900639 (**43**) tenanted mines on *Betula* sp. 21.iv.2011 — PJC & VFC

NEPTICULIDAE

- 33 *Bohemannia auriciliella* (Joannis) — Hodgemoor Wood SU9693 (**24**) 2.vii.2011, male genitalia det. PRH — PRH & MVA, *Ent. Rec.* **124**: 101-102
- 40 *B. pulverosella* (Staint.) — St John's Wood M999560 (**H25**) two vacated mines on *Malus sylvestris* 25.viii.2011 — KGMB
- 20 *Ectoedemia decentella* (H.-S.) — Chester Park, Bristol ST6374 (**34**) 2.vii.2011 — N. Jordan-Mellersh *per* RGG; Llanishen, Cardiff ST172822 (**41**) 26.vii.2011 — DJS; Lund SE9848 (**61**) 25.v.2011 — M. Coverdale *per* HEB
- 21 *E. sericopeza* (Zell.) — Swindon SU 1583 & 1484 (**7**) mines in samaras of *Acer Platanoides* 5.vii.2011 — R. Homan *per* EGS & MHS, *Ent. Rec.* **123**: 286-289; Cheltenham SO9424 (**33**) mine in fallen samara of *Acer platanoides* 30.vi.2011 — R. Homan *per* RGG; Birmingham SP0685 & SP0785 (**38**) vacated mines in samaras of *Acer platanoides* 22.viii.2011 — R. Homan *per* NJS; Cardiff ST1776, Cardiff Bay ST1874 (**41**) vacated mine and cocoon, 31.viii.2011 — R Homan *per* DJS; Cardiff

- ST1876 (**41**) tenanted mine 31.viii.2011 — DJS, **New to Wales**; Stamford Park, Hale SJ7787 (**58**) mines in samaras of *Acer platanoides* 9.vii.2011— R. Homan *per* SHH; Lightfoot Green SD513333 (**60**) to MV light 9.ix.2011, genitalia det. — SMP
- 22 *E. louisella* (Sircom) — Tarvin SJ4866 (**58**) cocoons and mines in samaras of *Acer campestre* 14.viii.2011 — M. Bellingham, H. John & SHH
- 24a *E. hannoverella* (Glitz) — Holme Fen TL222881 (**31**) tenanted mines on *Populus x canadensis* 2.xi.2011 — BD
- 25 *E. intimella* (Zell.) — Lightfoot Green SD513333 (60) vacated mine on *Salix caprea* 7.xii.2011, first VC record with data — SMP; Ballyscanlan S543029 (**H6**) tenanted mines on *Salix* sp. 20.x.2011—TB
- 30 *E. arcuatella* (H. -S.) — Mockery Wood SK950190 (**53**) vacated mines on *Fragaria vesca* 2.ix.2011 — MJG
- 34 *E. occultella* (Linn.) — Pengelli Forest NNR SN1251 3953 (**45**) mine on *Betula pendula* 25.x.2011 — ADL
- 35 *E. minimella* (Zett.) — Wyre Forest, Rock Coppice SO7673 (**37**) vacated mines on *Betula* sp. 8.x.2011 — ANBS
- 36a *E. heringella* (Mariani) — Thetford TL8783 (**28**) mine on *Quercus ilex* 3.iv.2011 — L. Gregory *per* JRW
- 37 *E. albifasciella* (Hein.) — The Argory H870580 (**H37**) vacated mine on *Quercus* sp. 20.ix.2011, det BE — K. Murphy *per* ER
- 38 *E. subbimaculella* (Haw.) — Cork City W662712 (**H4**) tenanted and vacated mines on *Quercus robur* 9.xi.2011 — KGMB; Ballyscanlan S543029 (**H6**) tenanted mines on *Quercus* sp. 18.x.2011 —TB
- 42 *E. septembrella* (Staint.) — Tramore S578014 (**H6**) tenanted mines on *Hypericum* sp. 5.vii.2011—TB
- 48 *Trifurcula cryptella* (Staint.) — Darren Wood, Llanstephan SO114430 (**43**), tenanted mine on *Lotus pedunculatus* 16.vi.2011 — PJC & VFC
- 50 *Stigmella aurella* (Fabr.) — Howford Bridge, Nairn NH877539 (**96**) vacated mines on *Rubus fruticosus* 20.iii.2011 — M. Taylor *per* MRY
- 57 *S. filipendulae* (Wocke) — Therfield Heath TL3340 (**20**) vacated mines on *Filipendula vulgaris* 24.vii.2011, first confirmed county record — J. Chainey & J. Spence *per* CWP
- 59 *S. poterii* (Staint.) — Bourne Wood TF077202 (**53**) mine on *Potentilla reptans* 2.ix.2011 — MJG
- 65 *S. speciosa* (Frey) — Middletown SJ305121 (**47**) vacated mine on *Acer pseudoplatanus* 18.vii.2011, det. PRW — D. Boyes *per* PRW; Durham NZ2742 (**66**) vacated mine on *Acer pseudoplatanus* 20.ix.2011 — R. Homan *per* TJB
- 73 *S. trimaculella* (Haw.) — Ruabon SJ309453 (**50**) vacated mines on *Populus nigra* 17.ix.2011 — JBF; Strawhall Wood W825970 (**H5**) two vacated mines on *Populus X canadensis* 9.x.2011 — KGMB
- 74 *S. assimilella* (Zell.) — Cwmbach, Glasbury SO166402 (**43**) tenanted mines on *Populus tremula* 11.ix.2011 — PJC & VFC, **New to Wales**
- 78 *S. incognitella* (H.-S.) — Llangynidr SO1520 (**42**) vacated mines on *Malus domestica* — JRL; Mount Stewart Estate J557703 (**H38**) vacated mine on *Malus domestica* 17.ix.2011, det. JRL from photograph — D. McCormick *per* ER, **New to Ireland**
- 88 *S. samiatella* (Zell.) — Barkestone Wood SK7996323 (**55**) vacated mine on *Castanea sativa* 5.xi.2011 — APR
- 90 *S. tiliae* (Frey) — Dartford Heath TQ5173 (**16**) vacated mines on *Tilia* sp. 19.x.2011 — DCG

- 98 *S. catharticella* (Staint.) — Hoxne TM1876 (**25**) vacated mine on *Rhamnus cathartica* 8.x.2011 — AWP; Hafod banks LNR SJ312467 (**50**) vacated mines on *Rhamnus cathartica* 17.x.2011 — JBF
- 102 *S. aceris* (Frey) — Leighton Buzzard SP9124 (**30**) vacated mines on *Acer campestre* 20.x.2011 — MGB *per* DVM; Old Weston TL1076 (**31**) vacated mine on *Acer pseudoplatanus* 16.ix.2011 — K. Royles *per* BD
- 104 *S. magdalena* (Klim.) — Pengelli Forest NNR SN125395 (**45**) mines on *Sorbus aucuparia* 7.vii.2011 — R. Taylor *per* ADL
- 107 *S. regiella* H-S. — Lower Woods ST7387 (**34**) tenanted mine on *Crataegus* sp. 19.ix.2011 — G.H.J. Meredith *per* RGG
- 111 *S. microtheriella* (Staint.) — Stansted Forest SU7610 (13) vacated mine on *Castanea sativa* 18.x.2011, previously unrecorded foodplant — MRY & JRL; Bridge of Logie NJ003497 (**95**) 7.x.2011 vacated mine on *Corylus avellana* — M. Taylor *per* MRY
- 115 *S. alnetella* (Staint.) — Killarney National Park (Ross Bay) V951889 (**H2**) vacated mine on *Alnus glutinosa* 25.x.2011 — KGMB; Killavullen W645993 (**H5**) two mines on *Alnus glutinosa* 28.ix.2011 — KGMB
- 118 *Enteucha acetosae* (Staint.) — Pendeen Watch SW379358 (**1**) several mines on *Rumex acetosae*, either vacated or with dead larvae, 25.vii.2011 — SDB & RJH; Petersfield SU755226 (11) tenanted mines on *Rumex acetosella* 14.ix.2011, first VC record since VCH — JRL

OPOSTEGIDAE

- 121 *Pseudopostega crepusculella* (Zell.) — Eskrigg NR, Lockerbie NY125803 (**72**) 13.viii.2011 — J. Rae, A. White & KAN

TISCHERIIDAE

- 124 *Tischeria dodonaea* Staint. — Ffynnon Gynydd SO165405 (**43**) tenanted mines on *Quercus* sp. 7.x.2011 — PJC & VFC

INCURVARIIDAE

- 128 *Phylloporia bistrigella* (Haw.) — Ballyscanlan S543029 (**H6**) tenanted mine on *Betula* sp. 14.ix.2011 — TB; Girley Bog N698702 (**H22**) 9.vii.2011 — EO'D
- 131 *Incurvaria oehlmanniella* (Hübner.) — Spurn TA4115 (**61**) 11.v.2011 — B.R. Spence *per* HEB
- 132 *I. praelatella* ([D. & S.]) — Fedw Wood SO1824 (**42**) 4.vi.2011 — C. Evans *per* NRL; Ffynnon Gynydd SO1641 (**43**) 27.v.2011 — NRL & JRL; Girley Bog N698702 (**H22**) 22.vi.2011 — EO'D

PRODOXIDAE

- 133 *Lampronia capitella* (Clerck) — Wyre Forest, Brand Wood SO736762 (**40**) larvae in shoots of *Ribes rubrum* 6.iv.2011, six moths bred — ANBS
- 134 *L. flavimitrella* (Hübner.) — Brede High Wood TQ799198 (**14**) 2.v.2011 — DM
- 135 *L. luzella* (Hübner.) — Coolavehy R686156 (**H8**) 26.vi.2011 — KGMB
- 136 *L. corticella* (Bjerk.) — Fenn's Moss SJ479355 (**50**) 14.vi.2011 — ANG & JEG
- 137 *L. morosa* Zell. — Long Wood TQ809238 (**14**) 14.v.2011, det. MSP — H. Martin *per* MSP; Sunderland Point SD4256 (60) netted on *Rosa pimpinellifolia* 25.v.2011, first VC record with data — SMP

ADELIDAE

- 140 *Nematopogon swammerdamella* (Linn.) — Vane Farm NT162990 (**85**) 5.v.2011 — DWWD
- 144 *Nemophora fasciella* (Fabr.) — Claxton TG3403 (**27**) 10.vii.2011 — M. Cocker *per* JRW
- 149 *Adela cuprella* ([D. & S.]) — Goodwick Moor SM946376 (**45**) 23.iii.2011 — R. Taylor *per* ADL
- 151 *A. croesella* (Scop.) — Bramfield TL289156 (**20**) 25.v.2011 — A. Wood; Braughing TL4224 (**20**) 25.v.2011 — B. Sale, both records *per* CWP
- 152 *A. rufimitrella* (Scop.) — near Redburn NS249683 (**75**) 8.vi.2011 — N. Gregory *per* MRY

HELIOZELIDAE

- 154 *Heliozela sericiella* (Haw.) — Llowes SO191420 (**43**) 20.iv.2011, female genitalia det. PJC — PJC & VFC; Ballyscanlan S543029 (**H6**) vacated mines on *Quercus* sp. 9.ix.2011 — TB
- 156 *H. resplendella* (Staint.) — Stoke Common SU9885 (**24**) 16.v.2011, two females genitalia det. PRH — MVA; Airyolland Lodge, Luce Bay NX3047 (**74**) tenanted mines on *Alnus glutinosa* 3.vii.2011 — K. McCabe *per* KAN; Cork City (Sundays Well) W665719 (**H4**) mines on *Alnus glutinosa* 23.ix.2011 — KGMB; Tooreen North W618901 (**H5**) mines on *Alnus glutinosa* 9.vii.2011 & 24.ix.2011 — KGMB; Carrickavrantry S550021 (**H6**) tenanted mine on *Alnus glutinosa* 28.viii.2011 — TB
- 157 *H. hammoniella* (Sorh.) — Carrickavrantry S544025 (**H6**) tenanted mine on *Betula* sp. 2.ix.2011 — TB; Girley Bog N698702 (**H22**) 22.vi.2011, genitalia det. KGMB — ADL
- 159 *Antispila treitschkiella* (F.v.R.) — Mockery Wood SK950190 (**53**) vacated mines and cut-outs on *Cornus sanguinea* 2.ix.2011 — MJG

PSYCHIDAE

- 179 *Dahlica lichenella* (Linn.) — The Ride, Saltram, Plymouth (**3**) cases on trunks of *Quercus ilex* 14.ii.2010, moths reared 5–14.iii.2010 and identification confirmed by DNA analysis — RJH
- 186 *Psyche casta* (Pall.) — Bach Howey SO1042 (**43**) case on leaf 28.v.2011, female emerged two days later — JRL; Cors Dyfi N.R. SN701985 (**47**) imago and larval cases 18.vi.2011, det. PRW — M. Wagland *per* PRW

TINEIDAE

- 200 *Psychoides filicivora* (Meyr.) — Belton Park SK933393 (**53**) larva on *Phyllitis scolopendrium* 11.xi.2011 — MJG; Leeds SE3336 (**64**) 21.ix.2010 — J. Walshe *per* HEB
- 206 *Stenoptinea cyaneimarmorella* (Mill.) — Monks Wood (**31**) in RIS trap 22–28.viii.2011, genitalia det. — K. Royles *per* BD
- 212 *Haplotinea insectella* (Fabr.) — Thorpe Hall park, Rudston TA1067 (**61**) 18.vi.2011, genitalia det. HEB — A.S. Ezard *per* HEB
- 217 *Nemapogon wolffiella* Karsh. & Niel. — Bawdeswell TG0420 (**27**) 16.viii.2011 — D. Appleton *per* JRW; Stibbard TF9827 (**28**) 25.vi.2010, det. JRL from photograph — T. Spencer *per* JRW; Northampton, Far Cotton SP7458 (**32**) 3.ix.2011 — M. Coles *per* DVM; Middletown SJ305121 (**47**) 19.viii.2011, det. M.D. Haigh — D. Boyes *per* PRW
- 218 *N. variatella* (Clem.) — Layer Wood, Tiptree TL9118 (**19**) four swept 4–10.vii.2011 — SAR

- 219 *N. ruricolella* Staint. — Dymock Wood SO6928 (**34**) 4.vii.2011, genitalia det. — G.H.J. Meredith *per* RGG
- 224 *Triaxomera parasitella* (Hüb.) — Great Trethew SX287600 (**2**) 3.vi.2011, det. LACT — J. Nicholls *per* LACT
- 228 *Monopis weaverella* (Scott) — Hill of Ratter ND244733 (**109**) 4.vi.2011 — N. Money *per* MRY
- 243 *Tinea dubiella* Staint. — Cheltenham SO9519 (**33**) 3.viii.2011, genitalia det. — G.H.J. Meredith *per* RGG
- 246 *T. semifulvella* Haw. — Heathfield Wood ND214742 (**109**) 20.vi.2011 — N. Money *per* MRY
- 278 *Opogona sacchari* (Bojer) — Turville Heath SU7491 (**24**) 3.vi.2006, female genitalia det. PRH — T. W. Harman *per* MVA

BUCCULATRICEAE

- 266 *Bucculatrix nigricomella* Zell. — Middletown SJ305121 (**47**) 22.v.2011, det. PRW — D. Boyes *per* PRW
- 269a *B. chrysanthemella* Rebel — Bishops Stortford TL4820 (**20**) at mv light 19.vi.2009, male genitalia prep. R. Terry det. Z. Tokar — J. Fish & J. Reeves, *Ent. Rec.* **124**: 59-63, **New to the British Isles**
- 270 *B. frangutella* (Goeze) — Church Hill TL 3339 (20) mines on *Rhamnus cathartica* 17.x.2011, first county record since 1890 — J. Chainey & J. Spence *per* CWP
- 272 *B. cidarella* Zell. — Tramore S569017 (**H6**) tenanted mines and moulting cocoon on *Alnus glutinosa* 21.viii.2011 — TB
- 273 *B. thoracella* (Thunb.) — Knightshayes Plantation SS9615 (**4**) 2 larvae on *Tilia* sp. 4.x.2011 — RJH; Durrell, Jersey WV678532 (**113**) 3 larvae on *Tilia* sp. 5.vi.2011, moth bred — RJH
- 274 *B. ulmella* Zell. — Hutton Conyers SE3273 (**65**) 3.ix.2011 — CHF; Ballyscanlan S543029 (**H6**) vacated mine on *Quercus* sp. 9.ix.2011 — TB
- 275 *B. bechsteinella* (Bech. & Scharf.) — Locks Park Farm, Hatherleigh SS518022 (**4**) 5.vi.2011 one at light — R. Wolton *per* RJH
- 276 *B. demaryella* (Dup.) — Hatfield Moors SE6805 (**63**) vacated mine on *Betula* sp. 28.x.2011 — S.R. Sowden *per* HEB; Ballyscanlan S543029 (**H6**) vacated mines and moulting cocoons on *Betula* sp. 12.ix.2011 — TB

GRACILLARIIDAE

- 281 *Caloptilia populetorum* (Zell.) — Sharow SE3271 (**64**) 1.x.2011, det HEB — J.C. Warwick *per* CHF
- 283 *C. betulicola* (Her.) — Carrickavrantry S544025 (**H6**) tenanted spinning on *Betula* sp. 30.viii.2011, moth bred — TB
- 284 *C. rufipennella* (Hüb.) — Cork City (Sundays Well) W667720 (**H4**) vacated leaf-cone on *Acer pseudoplatanus* 11.viii.2011 — KGMB
- 285 *C. azaleella* (Brants) — Orton Waterville TL156957 (**31**) 26.vii.2011 — J. Newman *per* BD; Chester-le-Street NZ2751 (**66**) 1.viii.2011 — K. Dover *per* TJB
- 286 *C. alchimiella* (Scop.) — Newton East Woods, Welsh Hook SM933270 (**45**) 8.vi.2011 — R. Taylor *per* ADL
- 288 *C. stigmatella* (Fabr.) — Lanark NS885431 (**77**) 21.iv.2011 — J Davis *per* MRY
- 289 *C. falconipennella* (Hüb.) — Summer Leys NR SP8863 (**32**) larval spinning on *Alnus glutinosa* 14.viii.2011 — BD *per* DVM; Cardiff ST154789 (**41**) 22.iii.2011 — GMT;

- Whetstone SP555958 (**55**) 27.iii.2011 — M.P. Skevington *per* APR; Ballyscanlan S543029 (**H6**) folds on *Alnus glutinosa* 9.ix.2011 — TB
- 290 *C. semifascia* (Haw.) — Cams Bay, Fareham SU5905 (11) larval spinings on *Acer platanoides*, moths bred and genitalia det. JRL, previously unrecorded foodplant — RJD & JRL
- 291 *C. hemidactylella* ([D. & S.]) — Avebury SU103703 (**7**) 27.iii.2011, genitalia det. EGS — D. Brotheridge *per* EGS & MHS
- 292 *C. leucapennella* (Steph.) — Chorleywood TQ0296 (**24**) 22.vi.2011, male genitalia det. PRH — A. King *per* MVA
- 293 *C. syringella* (Fabr.) — Brodie Castle NH981576 (**95**) vacated mine on *Fraxinus excelsior* 6.x.2011 — M. Taylor *per* MRY
- 294 *Aspilapteryx tringipennella* (Zell.) — Connansknowe, Kirkton NX972821 (**72**) 4.vii.2011, det KPB — R. & B. Mearns *per* KAN
- 296 *Calybites phasianipennella* (Hübner.) — Doddershall disused railway SP7120 (**24**) 12.x.2011, male genitalia det. PRH — DLW *per* MVA; Hutton Conyers SE3273 (**65**) 8.x.2011 — CHF; Connansknowe, Kirkton NX972821 (**72**) 3.viii.2011, det. KPB — R. & B. Mearns *per* KAN
- 297 *Eucalybites auroguttella* (Steph.) — Carrickavrantry S544026 (**H6**) vacated mine on *Hypericum* sp. 30.viii.2011 — TB
- 299 *Parectopa ononidis* (Zell.) — Cardiff ST154789 (**41**) 27.vii.2011 — GMT, **New to Wales**
- 302 *Parornix fagivora* (Frey) — Middleton Park SE3028 (**63**) vacated leaf folds on *Fagus sylvatica* 27.x.2011 — CHF
- 313 *Acrocercops brongnardiella* (Fabr.) — Mount Edgcumbe Country Park SX456527 (2) vacated mines on *Quercus ilex* 30.ix.2011, first county record since VCH — B.P. Henwood *per* LACT; Parkside SJ381588 (**50**) vacated mine on *Quercus* sp. 16.x.2011 — JBF; The Argory H870580 (**H38**) vacated mine on *Quercus* sp. 20.ix.2011, det. BE — K. Murphy *per* ER
- 317 *Phyllonorycter heegeriella* (Zell.) — Balrath Wood N988641 (**H22**) 7.v.2011 — EO'D
- 321a *P. platani* (Staud.) — Bideford SS455270 (**4**) one mine on *Platanus x hispanica* 17.ix.2011 — SDB & RJH
- 323 *P. oxycanthae* (Frey) — Kilmorack NH477441 (**96**) 15.vii.2011, det. MRY — J. Kemp *per* MRY
- 324 *P. sorbi* (Frey) — Maes yr Haf, Newport SN05713896 (**45**) mine on *Sorbus aucuparia* 23.vi.2011 — ADL
- 325 *P. mespilella* (Hübner.) — College Wood TF120753 (**54**) mines on *Sorbus torminalis* 21.x.2011, moths bred and genitalia det. — MJG
- 326 *P. blancardella* (Fabr.) — Rosemoor (RHS Garden) SS4917 (**4**) a few mines on *Malus domestica* 28.vii.2011 — SDB & RJH
- 328 *P. junoniella* (Zell.) — Berwyns SH966277 (**47**) 25.iii.2011 — ANG & JEG *per* PRW; Minnigaff NX412665 (**73**) 28.ix.2011, det MRY from photograph — G. Chambers *per* KAN
- 332a *P. leucographella* (Zell.) — Swarland NU165035 (**68**) vacated mines on *Pyracantha* sp. 18.x.2011 — A.J. Fairclough *per* TJT; Tramore S578014 (**H6**) tenanted mine on *Malus domestica* 4.viii.2011, moth bred — TB
- 337 *P. hilarella* (Zett.) — Lien of Garmouth NJ332657 (**95**) 29.vii.2011 — MRY; Girley Bog N698702 (**H22**) 22.vi.2011 — EO'D
- 342 *P. coryli* (Nic.) — Den of Pitlurg NJ4345 (**94**) tenanted mine on *Corylus avellana* 30.x.2011 — MRY

- 343 *P. esperella* (Goeze) — Knightshayes Plantation SS9615 (**4**) mines on *Carpinus betulus* 4.x.2011, moth bred — RJH
- 344 *P. strigulatella* — Swarland NU165035 (**68**) tenanted mines on *Alnus incana* 18-22.iii.2011 — A.J. Fairclough per TJT
- 351 *P. lautella* (Zell.) — Cooldurragha Wood R599037 (**H5**) mines on sapling *Quercus* 29.vii.2011 — KGMB
- 353 *P. ulmifoliella* (Hübner) — Carrickavrantry S544025 (**H6**) tenanted mine on *Betula* sp. 3.vii.2011 — TB
- 358 *P. froelichiella* (Zell.) — Masham SE2180 (**65**) tenanted mines on *Alnus glutinosa* 12.x.2010, moths bred — CHF
- 360 *P. kleemannella* (Fabr.) — Whetstone SP555958 (**55**) 1.viii.2011 — M.P. Skevington per APR
- 363 *P. platanoidella* (Joannis) — Trago Mills, Liverton near Newton Abbot SX822746 (**3**) mine on *Acer platanoides* 4.ix.2010, moth bred 13.ix.2010 — RJH
- 364 *P. geniculella* (Rag.) — Ninch O151712 (**H22**) 3.viii.2011 — EO'D
- 365 *P. comparella* Dup. — Twynning SO8937 (**33**) vacated mine on *Populus* sp. 26.ix.2011 — R. Homan per RGG
- 366a *Cameraria ohridella* Deschk. & Dim. — Maenan SH7966 (**49**) mine on *Aesculus hippocastanum* 1.vii.2011 AMB & MGB
- 367 *Phyllocnistis saligna* (Zell.) — Alconbury TL185757 (**31**) 1.viii.2011, genitalia det. BD — P. Rowlings & BD
- 369 *P. xenia* Hering — Lackford TL7970 (**26**) mine on *Populus alba* 27.viii.2011 — AWP

CHOREUTIDAE

- 386 *Tebenna micalis* Mann — Slimbridge SO7104 (**34**) 26.viii.2011 — A. Prior per RGG
- 388 *Prochoreutis myllerana* (Fabr.) — Commins Coch SH845028 (**47**) 10.viii.2011, det. M.D. Haigh — PRW; near First Coast NG921910 (**108**) larvae on *Scutellaria galericulata* 18.v.2011, moths bred — RJH

GLYPHIPTERIGIDAE

- 394 *Glyphipterix forsterella* (Fabr.) — Ffynnon Gynydd SO1641 (**43**) 27.v.2011 — NRL & JRL; St Cyrus NNR NO7463 (**91**) 26.vi.2011 — MRY; Carrickavrantry S551028 (**H6**) 2.vi.2011 — TB
- 395 *G. haworthana* (Steph.) — near Talmine NC5863 (**108**) pupae in heads of *Eriophorum* sp. 21.iv.2011, moths bred — SDB & RJH

YPONOMEUTIDAE

- 409a *Argyresthia trifasciata* Staud. — Tramore S578014 (**H6**) 15.v.2011 — TB; Priory Park, Finaghyn J311699 (**H39**) 6.v.2011 — C. Mellon per ER, **New to Ireland**
- 409b *A. cupressella* Wals. — Biggleswade TL1944 (**30**) 1.vi.2011 — L. Burgess per DVM
- 410 *A. brockeella* (Hübner) — Girley Bog N698702 (**H22**) 22.vi.2011 — EO'D
- 415 *A. retinella* Zell. — Girley Bog N698702 (**H22**) 22.vi.2011 — EO'D
- 416 *A. glaucinella* Zell. — Wern Dover Wood SO1540 (**43**) larval feeding signs in bark of *Quercus robur* 23.iv.2011 — PJC, VFC & JRL
- 417 *A. spinosella* Staint. — Philip & Mary NX324456 (**74**) 4.vi.2011, det. KPB — R. & B. Mearns per KAN
- 418 *A. conjugella* (Zell.) — Coolavehy R685158 (**H8**) 11.vi.2011 — KGMB

- 420 *A. pruniella* (Clerck) — Lanark NS885431 (**77**) 2.ix.2011 — J. Davis *per* MRY
- 424 *Yponomeuta evonymella* (Linn.) — Claonaig NR8655 (**101**) 2.viii.2011, det. MRY — G. Hunter *per* MRY; St John's Wood M995564 (**H25**) 25.viii.2011 — KGMB
- 427 *Y. cagnagella* (Hübner) — Airyolland Lodge, Luce Bay NX300473 (**74**) 8.vii.2011 — K. McCabe *per* KAN; Wickes NS813926 (**86**) larvae on *Euonymus japonicus* 21.v.2011, moths bred, det. MRY — H. Clayden & J. Knowler *per* MRY
- 429 *Y. irrorella* (Hübner) — Lower Earley SU7670 (**22**) larvae and pupae on *Euonymus europaeus* 2.v. 2011, moths bred — I.R. Sims *per* MCH
- 434 *Kessleria saxifragae* (Staint.) — Allt Mòr near Rassal NG854433 (**105**) a few larvae on *Saxifraga aizoides* 16.v.2011, moths bred — RJH
- 436 *Pseudoswammerdamia combinella* (Hübner) — Rainford SD475014 (59) to actinic light 10.v.2011, first record for over 100 years — S. Williams *per* SMP
- 438 *Swammerdamia pyrella* (Vill.) — Stamullen O146662 (**H22**) 14.vii.2011 — EO'D
- 439 *S. compunctella* (H.-S.) — Kildarry NH7775 (**106**) 30.vi.2011, det. MRY — N. G. J. Richards *per* MRY
- 442 *Cedestis gysseleniella* (Zell.) — Fulwood SD5332 (**60**) to MV light 26.vi.2011, det. SMP — A. Powell *per* SMP
- 445 *Ocnerostoma friesei* (Svensson) — Dersingham TF6830 (**28**) 14.iv.2011, genitalia det. — R. Jones *per* JRW; Llangynidr SO1520 (**42**) 3.viii.2011 — JRL; Aughinlig H871538 (**H37**) 13.iv.2011, genitalia det. BE — K. Murphy *per* ER
- 449c *Prays oleae* (Bernard) — Northwood SZ4894 (**10**) mine on *Olea europaea* containing cast larval skin 23.ix.2011, det. DTB — M. Cahill *per* DTB
- 452 *Ypsolopha nemorella* (Linn.) — Old Torr NX812522 (**73**) 31.vii.2011 — P. Norman *per* KAN; North Loch Eynort, South Uist NF790283 (**110**) 20.vii.2011 — C. Johnson *per* MRY
- 455 *Y. scabrella* (Linn.) — Swarland NU165035 (**68**) 17.viii.2011 — A.J. Fairclough *per* TJT
- 456 *Y. horridella* (Treits.) — Ledbury SO720365 (**36**) 27.vii.2011 — MWH *per* ANBS; North Ferriby TA0026 (**61**) 31.vii.2011 — I. Marshall *per* HEB
- 252 *Ochsenheimeria urella* F. v R. — Malham Tarn SE8967 (**64**) 29.vii.2011, male genitalia det. — CHF
- 253 *O. vacculella* F. v R. — Aberedw Rocks SO083453 (**43**) 22.viii.2011, male genitalia det. VFC — PJC & VFC; Broadholme SK896742 (**56**) 2.vii.2011 — MJG
- 465 *Plutella porrectella* (Linn.) — Dornockbrow NY238652 (**72**) 14.viii.2011 — B. Hammond *per* KAN; Kildarry NH7775 (**106**) 18.vi.2011, det. MRY — N. G. J Richards *per* MRY
- 468 *Rhigognostis incarnatella* (Steud.) — Linlithgow Bridge NS982769 (**84**) 25.iii.2011 — MGC
- 470 *Orthotelia sparganella* (Thunb.) — Caerlaverock WWT NY053658 (**72**) 22.vii.2011 — A. White & KAN
- 473 *Acrolepiopsis assectella* (Zell.) — Little Paxton TL193628 (**31**) 1.vi.2011 — I. Dawson *per* BD; Peterborough TL1799 (**32**) 24.iii.2011 — M. Weedon *per* DVM; Kenilworth SP286711 (**38**) 19.viii.2011 — M. Kennard *per* NJS
- 476 *Acrolepia autumnitella* Curt. — Carrickavrantry S549025 (**H6**) tenanted mines on *Solanum dulcamara* 30.viii.2011, moth bred — TB; Stamullen O146662 (**H22**) 16.iv.2011 — EO'D; Sheepland J570380 (**H38**) 3.viii.2011, genitalia det. JC — K. Murphy *per* ER

LYONETIIDAE

- 254 *Leucoptera laburnella* (Staint.) — Kildarry NH7775 (**106**) vacated mines on *Laburnum anagyroides* 3.x.2011 — N. Richards *per* MRY; near Greenville, Jersey WV594488 (**113**) tenanted mines and cocoons on *Laburnum anagyroides* 7.vi.2011, moths bred — RJH
- 263 *Lyonetia clerkella* (Linn.) — Applecross NG7145 (**105**) vacated mines on *Malus* sp. 23.vi.2011 — SMP
- 264 *Bedellia somnulentella* (Zell.) — Parrog, Newport SN0439 (**45**) tenanted mine on *Calystegia sepium* 27.ix.2011 — DJS *per* ADL

COLEOPHORIDAE

- 490 *Coleophora lutipennella* (Zell.) — Locks Park Farm, Hatherleigh SS518022 (**4**) 25.vii.2011, genitalia det. RJH — R. Wolton *per* RJH; Skelton NZ6518 (**62**) 4.vii.2011, genitalia det. HEB — D. Money *per* HEB
- 492 *C. flavipennella* (Dup.) — Ken-Dee Marshes RSPB Reserve NX691691 (**73**) 21.vii.2011, genitalia det. MRY — A. Robertson, W. Cranstoun, A. White & KAN
- 493 *C. serratella* (Linn.) — Girley Bog N698702 (**H22**) 22.vi.2011, genitalia det. KGMB — ADL
- 494 *C. coracipennella* (Hübner) — Icklesham TQ888155 (**14**) 26.vii.2011, genitalia det. AMD — I. Hunter *per* AMD
- 504 *C. lusciniapennella* (Treits.) — Ballyscanlan S543029 (**H6**) case on *Salix* sp. 20.x.2011 — TB
- 509 *C. violacea* (Ström) — Long Ash SX4969 (**3**) case on *Corylus avellana* 12.x.2010, moth bred — T. Sleep *per* RJH; Gight Woods NJ8239 (**93**) larval feeding signs on *Corylus avellana* — MRY
- 516 *C. trifolii* (Curt.) — High Batts NR SE2976 (**65**) 9.vii.2011, male genitalia det. CHF — CHF, J.C. Warwick & D.M. Bowes
- 517a *C. frischella* (Linn.) — Upper Coldwell LWT reserve SD9036 (**59**) netted 19.v.2011, genitalia det. SMP — K. McCabe *per* SMP
- 518 *C. mayrella* (Hübner) — Glasbury SO163399 (**43**) 8.vi.2011 — PJC & VFC; Mount Stewart Estate J555701 (**H38**) 29.v.2011 — D. McCormick *per* ER
- 520 *C. amethystinella* Ragonot (= *fuscicornis* auctt.) — Beddington Sewerage Farm TQ2965 (**17**) in Malaise trap 2-30.vi.2009, female genitalia det. GAC — D.A. Coleman & GAC
- 521 *C. conyzae* Zell. — Magdalen Hill Down SU5029 (**12**) 26.vi.2011, genitalia det. — MJW
- 523 *C. hemerobiella* (Scop.) — Covingham SU1985 (**7**) 27.vi.2011, genitalia det. D. Brotheridge — W. Clinch *per* EGS
- 524 *C. lithargyrinella* Zell. — Cobb's Cross SO763335 (**37**) cases on *Stellaria holostea* 29.vi.2011, moth bred — ANBS
- 526 *C. laricella* (Hübner) — Whimble Hill, New Radnor SO2162 (**43**) 20.vi.2011, male genitalia det. VFC — PJC & VFC; Slieve Aughties (Hollymount) M524043 (**H15**) case and mines on *Larix* 30.iv.2011 — KGMB
- 534 *C. currucipennella* Zell. — Hodgemoor Wood SU9693 (**24**) 11.vii.2011, male genitalia prep. PRH, det. P. Clement — PRH *per* MVA
- 541 *C. pyrrhulipennella* Zell. — Cruachan, South Uist NF8014 (**110**) 19.vi.2011 — J Kemp *per* MRY
- 547 *C. discordella* Zell. — Hutton Conyers SE3273 (**65**) 24.vii.2011, male genitalia det. — CHF; Airyolland Lodge, Luce Bay NX3047 (**74**) 24.iv.2011 — K. McCabe *per* KAN

- 525 *C. solitariella* Zell. — Stoke Common SU9885 (**24**) in malaise trap 30.vi – 5.vii.2011, male genitalia det. PRH — MVA
- 553 *C. striatipennella* Nyl. — Sapcote SP490937 (**55**) 6.iv.2011, genitalia det. A.J. Mackay — G.E. Calow *per* APR
- 554 *C. inulae* Wocke — Yarborough, Scunthorpe SE933096 (**54**) 2.vi.2011, genitalia det. HEB — R. Woods *per* MJG; Staveley NR SE3663 (**64**) 27.vi.2011, male genitalia det. CHF — CHF, J.C. Warwick & R. Evison; Hutton Conyers SE3273 (**65**) 20.vi.2011, male genitalia det. — CHF
- 560 *C. paripennella* Zell. — West Barr, Luce Bay NX319461 (**74**) case on *Centaurea nigra* 29.iv.2011 — K. McCabe *per* KAN
- 561 *C. therinella* Tengst. — Westcott SP7117 (**24**) 26.vii.2011, male genitalia det. PRH — MVA
- 562 *C. asteris* Mühlig — Howden Nature Reserve North Tyneside NZ34066 (**67**) 2.ix.2010, male genitalia det. — KR
- 563 *C. argentula* (Steph.) — Fountains Abbey SE2768 (**64**) 18.vii.2011, male genitalia det. CHF — CHF & J.C. Warwick; Marne Barracks SE2597 (**65**) 15.vii.2011, male genitalia det. CHF — CHF, J.C. Warwick & D.M. Bowes; Low Hauxley NU286025 (**67**) cases on *Achillea millefolium* 23.xii.2011 — A.J. Fairclough *per* TJT
- 564 *C. virgaureae* Staint. — Mill Bay, Carlingford Lough J256132 (**H38**) 23.vii.2011, genitalia det. JC — K. Murphy *per* ER
- 565 *C. saxicolella* (Dup.) — Cresswell NZ302927 (**67**) 4.viii.2011, genitalia det. — A.J. Fairclough *per* TJT; Virkie HU392124 (**112**) 26.vii.2011, genitalia det. JC — P. Harvey *per* MRY; Ninch O151712 (**H22**) 27.vii.2011, genitalia det. KGMB — EO'D
- 566 *C. sternipennella* (Zett.) — Worcester SO83605326 (**37**) 26.vii.2011, genitalia det. — O. Wadsworth *per* ANBS; Cwmbach, Glasbury SO162390 (**43**) 26.vii.2011, female genitalia det. VFC — PJC & VFC; Hutton Conyers SE3273 (**65**) 13.viii.2011, female genitalia det. — CHF
- 568 *C. versurella* Zell. — Connansknowe, Kirkton NX972821 (**72**) 19.vii.2011, genitalia det. KPB — R. & B. Mearns *per* KAN
- 577 *C. artemisicolella* Bruand — Alvecote Wood SK25100359 (**38**) 21.vii.2011, male genitalia det. — A. Prior *per* NJS
- 552 *C. lassella* Staud. — Braunton Burrows SS4534 (**4**) one 21.vi.2010, genitalia det. RJH — SDB & RJH
- 581 *C. taeniipennella* H.-S. — Druridge Pools NZ273968 (**67**), cases on *Juncus articulatus* 22.xi.2011 — A.J. Fairclough *per* TJT; Lough Gay R277211 (**H8**) 2.vii.2011 — KGMB
- 582 *C. glaucicolella* (Wood) — Tynemouth NZ363704 (**67**) 12.vii.2011, male genitalia det. J.W. Philipson — TJT
- 586 *C. adjunctella* Hodgk. — Airyolland Lodge, Luce Bay NX300473 (**74**) 3.vii.2011, genitalia det. SMP — K. McCabe *per* KAN
- 587 *C. caespitiella* Zell. — Locks Park Farm, Hatherleigh SS518022 (**4**) one 22.vi.2011, genitalia det. RJH — R. Wolton *per* RJH
- 588 *C. salicorniae* Hein. & Wocke — Severn Beach ST5384 (**34**) case on *Salicornia* sp. 29.ix.2011 — G.H.J. Meredith *per* RGG

ELACHISTIDAE

- 590 *Perittia obscurepunctella* (Staint.) — Brynyrhydd SO1841 (**43**) tenanted mines on *Lonicera periclymenum* 26.vi.2011 — PJC, VFC & JRL

- 600 *Elachista luticomella* Zell. — Ffynnon Gynydd SO161409 (**43**) 28.v.2011, male genitalia det. PJC — PJC & VFC; Carrickavrantry S551028 (**H6**) 2.vi.2011 — TB
- 601a *E. nobilella* Zell. — Lynchmere Common SU8630 and Woolbeding Common SU8725 (**13**) tenanted and vacated mines on *Deschampsia flexuosa* 15.iv.2011, moths bred — GAC, AMD, JRL & C.W. Stanforth
- 602 *E. apicipunctella* Staint. — Pucketty Farm, Faringdon SU3198 (**22**) 22.iv.2011 — MFVC
- 608 *E. rufocinerea* (Haw.) — The Raven T1126 (**H12**) 20.v.2011 — EO'D
- 611 *E. triatomea* (Haw.) — Merthyr Mawr Warren SS8677 (**41**) 4.vii.2011 — P. Parsons per DJS
- 613 *E. subocellea* (Steph.) — Dunraven Park SS8872 (**41**) 14.vii.2011 — P. Parsons per DJS
- 622 *E. adscitella* Staint. — Writtle College TL676067 (**19**) 26.vi.2011, genitalia det. — BG; Scar Close NNR SD76577 (**64**) 15.vi.2011, male genitalia det. HEB - CHF, J.C. Warwick & T.M. Whitaker
- 626 *Biselachista serricornis* (Staint.) — Fearnmore NG7260 (**105**) 18.vi.2011 — SMP
- 629 *B. utonella* (Frey) — Whitfield Wood SP6439 (**24**) 26.vi.2011, male genitalia det. PRH — D.L. Wilton per MVA; Tramore S578014 (**H6**) 14.vii.2008, genitalia det. KGMB — TB; Peatlands Park H890604 (**H37**) 31.vii.2011, genitalia det. JC — K. Murphy per ER
- 631 *Cosmiotes freyerella* (Hübner) — Locks Park Farm, Hatherleigh SS5184022 (**4**) 17.iv & 22.vi.2011 genitalia det. RJH — R. Wolton per RJH
- 632 *C. consortella* (Staint.) — Monk Wood SO80366087 (**37**) 1.iv.2011, genitalia det. — O. Wadsworth per ANBS
- 633 *C. stabilella* (Staint.) — Glasbury SO180390 (**43**) 6.v.2011 — PJC & VFC

OECOPHORIDAE

- 636 *Denisia similella* (Hübner) — Swarland NU165035 (**68**) 8.viii.2011 — A.J. Fairclough per TJT
- 638a *D. albimaculea* (Haw.) — Ampthill Park TL0238 (**30**) 28.v.2011 — AMB & MGB per DVM; Northampton, Far Cotton SP7458 (**32**) 29.v.2011 — M. Coles per DVM
- 637 *Crassa tinctella* (Hübner) — Chorleywood TQ0296 (**24**) 8.v.2011, male genitalia det. PRH — R. Ellis per MVA
- 640 *Batia lunaris* (Haw.) — Glasbury SO180390 (**43**) 26.vii.2011 — PJC & VFC
- 642a *Metalampra italica* Baldizzone — Over Wallop SU2838 (**12**) 13.viii.2011, genitalia det. JC — T.J. Norriss *et al.* per MJW; Warnham LNR TQ168323 (**13**) 20.vi.2011, genitalia det. AMD — J. Everitt per AMD; Saltwood TR15533542 (**15**) 16.vi.2011 — P.D. Howe per IDF, *Atropos* **44**: 60
- 644 *Borkhausenia fuscescens* (Haw.) — Ninch O151712 (**H22**) 10.vii.2011 — EO'D
- 646 *Telechrysis tripuncta* (Haw.) — Howey SO052590 (**43**) 5.vi.2011 — C. & D. Parry per PJC & VFC; Sapcote SP490937 (**55**) 28.v.2011 — G.E. Calow per APR
- 652a *Harpella forficella* (Scop.) — Barkham SU784676 (**22**) 19.viii.2011 — N.J. & A. Percival per MCH, *BJENH* **24**(4): 220, **New to the British Isles**
- 656 *Tachystola acroxantha* (Meyr.) — Chorleywood TQ0296 (**24**) 29.v.2011 — R. Ellis per MVA; Traethdy, Harlech SH574301 (**48**) 26.viii.2011 — H. Bantock per ANG; Crookston Wood NS5263 (**76**) 4.vii.2011, det. KPB — P. Lintott per KPB, **New to Scotland**
- 658 *Carcina quercana* (Fabr.) — Logan Botanical Gardens NX0942 (**74**) 11.viii.2011 — KAN & M. S. Pollitt

- 663 *Diurnea fagella* ([D. & S.]) — Glenstockadale, Leswalt NX001611 (**74**) 10.iv.2011 — V. Harrison *per* KAN
- 664 *D. lipsiella* ([D. & S.]) — Low Camer Wood NX368727 (**73**) 12.x.2011, det. R. Leverton from photograph — G. Chambers *per* KAN
- 666 *Semiscopis avellanella* (Hübner.) — Llanddewi SO104686 (**43**) 24.iii.2011 — I. & R. Standen, *per* PJC & VFC; Craignure, Isle of Mull NM715373 (**103**) 7.iv.2011, det. MRY — A. Skeates *per* MRY
- 667 *S. steinkellneriana* ([D. & S.]) — Llanddewi SO104686 (**43**) 7.iv.2011 — I. & R. Standen, *per* PJC & VFC; Piper's Knowe Quarry NT879593 (**81**) 13.iv.2011, det. MRY — B. Prater *per* MRY
- 671 *Depressaria ultimella* Staint. — Cossington Meadows SK5913 (**55**) 21.iv.2011, genitalia det. M.P. Skevington — APR & M.P. Skevington
- 674 *D. badiella* (Hübner.) — Murlough NNRJ411354 (**38**) 27.viii.2011, genitalia det. JC — ER
- 678 *D. sordidatella* Tengst. — Flixton SJ741938 (59) to MV light 20.vii.2011, first record for over 100 years, genitalia det. SMP — K. McCabe *per* SMP
- 685 *Levipalpus hepatariella* (L. & Z.) — Sangobeg NC426666 (**108**) at MV light 15.viii.2010 — P.D. Kyle *per* MFVC
- 689 *Agonopterix ciliella* (Staint.) — Barscube Hill NS386719 (**76**) 10.iv.2011, det. N. Gregory — D. Fotheringham *per* MRY
- 692 *A. subpropinquella* (Staint.) — coastal path east of Le Creux de Lasse, Jersey WV593553 (113) two larvae on *Serratula tinctoria* 4.vi.2011, moth bred, previously unrecorded foodplant — RJH, *Ent. Rec.* **124**: 102
- 695 *A. alstromeriana* (Cl.) — Dornockbrow NY238652 (**72**) 10.iv.2011, det. MRY from photograph — B. Hammond *per* KAN
- 696 *A. propinquella* (Treits.) — Dornockbrow NY238652 (**72**) 15.vi.2011, det. MRY from photograph — B. Hammond *per* KAN; Kidston Mill NT242430 (**78**) 30.iv.2011, det. MRY — J. Woolliams *per* MRY
- 697 *A. arenella* ([D. & S.]) — Peebles NT24833982 (**78**) 31.viii.2011 — R. Singleton *per* MRY
- 698 *A. kaekeritziana* (Linn.) — Howey SO052590 (**43**) 20.viii.2011 — C. & D. Parry *per* PJC & VFC
- 699 *A. bipunctosa* (Curt.) — coastal path east of Le Creux de Lasse, Jersey WV593553 (**113**) two larvae on *Serratula tinctoria* 4.vi.2011, moth bred — RJH
- 701 *A. ocellana* (Fabr.) — Sandford NS723433 (**77**) 30.ix.2011 — M. & V. Pink *per* MRY
- 704 *A. scopariella* (Hein.) — Totland SZ328860 (**10**) 29.ix.2011, det. BE — SAK-J
- 705 *A. umbellana* (Fabr.) — Kildarry NH7775 (**106**) 26.ii.2011, det. MRY — N. G. J. Richards *per* MRY
- 708 *A. carduella* (Hübner.) — Rowleth Wood SD9697 (**65**) 12.viii.2011, male genitalia det. CHF — CHF, J.C. Warwick & T.M. Whitaker
- 710 *A. conterminella* (Zell.) — Nantmel SO017659 (**43**) 30.vii.2011, female genitalia det. VFC — S. Jones, PJC & VFC; Island Wood (Liscongil) R326046 (**H4**) 30.vii.2011 — KGMB; Donsallagh East R114767 (**H9**) 13.vii.2011 — KGMB

GELECHIIDAE

- 724 *Metzneria lappella* (Linn.) — Gloucester SO8317 (**33**) 2.vi.2011, genitalia det. R. Homan — G.R. Avery *per* RGG; Howick NU258178 (**68**) 29.v.2011 — S. Sexton *per* TJT; Philip & Mary NX325457 (**74**) 25.iv.2011 — K. McCabe *per* KAN

- 726 *M. metzneriella* (Staint.) — Middletown SJ305121 (**47**) 4.vi.2011, det. PRW — D. Boyes *per* PRW; Lochwinnoch Nature Reserve NS359581 (**76**) 7.vi.2011 — M. McGinty *per* MRY
- 727 *M. neuropterella* (Zell.) — Fackendon Down TQ531605 (**16**) 5. & 19.viii.2011 — NW & J. Hunter
- 727a *M. aprilella* (H.-S.) — Orton Waterville TL156957 (**31**) 5.vi.2011, genitalia det. BD — J. Newman *per* BD
- 729 *Isophrictis striatella* ([D. & S.]) — Dersingham TF6929 (**28**) 31.vii.2011 — A. Drewitt *per* JRW
- 730 *Apodia bifractella* (Dup.) — Old Weston TL099774 (**31**) 13.viii.2011, genitalia det. — K. Royles *per* BD
- 731a *Eulamprotes immaculatella* (Douglas) — nr South Light, Lundy SS144437 (**4**) one 21.ix.2011, genitalia det. — RJH; Lein of Garmouth NJ3365 (**95**) 16.vii.2011 — MRY; South Glendale, South Uist NF791153 (**110**) 18.vi.2011, genitalia det. JC — J. Kemp *per* MRY
- 732 *E. unicolorella* (Dup.) — Ring Haw NR TL0597 (**32**) 28.v.2011 — J. Skinner *per* DVM
- 728 *Monochroa cytisella* (Curt.) — Hay Wood SP20787097 & SP20967117 (**38**) 25.vi.2011, female genitalia det. — NJS & M. Kennard; Llyn Gwyn SO007651 (**43**) 31.vii.2011 male genitalia det. PJC — PJC & VFC
- 735 *M. tenebrella* (Hübner) — Rhos yr Hafod, Elan SN909678 (**43**) 3.vii.2011 — PJC & VFC; Hutton Conyers SE3273 (**65**) 12.vi.2011, male genitalia det. — CHF; Carrickavrantry S549025 (**H6**) 14.vi.2011 — TB
- 740 *M. hornigi* (Staud.) — Gare Hill ST778398 (**8**) 29.vii.2011, genitalia det. EGS — EGS & MHS; Staveley NR SE3663 (**64**) 27.vi.2011, male genitalia det. CHF — CHF, J.C. Warwick & R. Evison
- 741 *M. suffusella* (Dougl.) — Potteric Carr SE5900 (**63**) 1.viii.2011, genitalia det. — R.I. Heppenstall *per* HEB
- 742 *M. lutulentella* (Zell.) — Cranmore SZ396901 (**10**) 31.v.2011, genitalia det. — MCH
- 746 *Chrysoesthia drurella* (Fabr.) — Northampton, Far Cotton SP7458 (**32**) mines on *Chenopodium* sp. 25.ix.2011 — M. Coles *per* DVM
- 747 *C. sexguttella* (Thunb.) — Glasbury SO183385 (**43**) vacated mines on *Chenopodium album* 29.vi.2011 — PJC & VFC
- 748 *Ptocheuusa paupella* (Zell.) — Calvert SP6825 (**24**) 3.ix.2011, female genitalia det. PRH — D.L. Wilton *per* MVA; Reighton Gap TA1476 (**61**) three 24.viii.2011 — D. Shenton *per* HEB
- 777 *Bryotropha basaltinella* (Zell.) — Tynemouth NZ364705 (**67**) 02.viii.2008 — TJT; Anstruther NO563032 (**85**) 17.vii.2011, genitalia det. KPB — A-M. Smout *per* DWWD, **New to Scotland**
- 779 *B. affinis* (Haw.) — Lockerbie NY128835 (**72**) 15.vi.2011 — SMP *per* KAN; Whitmuir Farm NT4926 (**80**) 25.vi.2011, det. MRY — T. de Bordes *per* MRY; Eyemouth NT941646 (**81**) 25.v.2011, det. MRY — B. Prater *per* MRY
- 788 *B. politella* (Staint.) — Battlesbury Bowl ST8945 (**8**) 25.v.2011, genitalia det. EGS — EGS & MHS; Bargrug NX8663 (**73**) 29.ix.2011, genitalia det. MRY — R. & B. Mearns & A. White *per* KAN
- 758 *Recurvaria leucatella* (Cl.) — Lower Stondon TL1534 (**30**) 11.vii.2011 — AMB & MGB *per* DVM; Monanaleen R285929 (**H9**) 23.vii.2011 — EO'D, **New to Ireland**
- 765 *Teleiodes vulgella* ([D. & S.]) — Stamullen O146662 (**H22**) 14.vii.2011 — EO'D
- 774a *T. flavimaculella* (H.-S.) — Barnridge, Bentley Wood SU2429 (**8**) 26.vii.2011, genitalia prep. PRH, det. JRL, conf. K. Sattler — M.C. Townsend *per* PRH

- 767 *Carpatolechia decorella* (Haw.) — Kildarry NH7775 (**106**) 2.iv.2011, det. MRY — N. G. J. Richards *per* MRY
- 768 *C. notatella* (Hübner) — Brackagh Moss, Co. Armagh, grid J0251 (**H37**) 1.vi.2011, genitalia det. JC — K. Murphy *per* ER
- 770 *C. proximella* (Hübner) — Girley Bog N698702 (**H22**) 9.vii.2011 — EO'D
- 772 *C. fugitivella* (Zell.) — Lochwinnoch RSPB Reserve NS359581 (**76**) 17.vii.2011, det. MRY — M. McGinty *per* MRY; Ninch O151712 (**H22**) 27.vii.2011, genitalia det. KGMB — EO'D
- 776 *Teleiopsis diffinis* (Haw.) — Llanfyllin SJ157210 (**47**) 5.v.2011, det. PRW — M.D. Haigh *per* PRW; Sheepland J570380 (**H38**) 3.viii.2011, genitalia det. JC — K. Murphy *per* ER
- 790 *Chionodes fumatella* (Dougl.) — Westcott SP7117 (**24**) 26.vii.2011, male genitalia det. PRH — D.L. Wilton *per* MVA
- 792 *Mirificarma mulinella* (Zell.) — Chapel Finian NX297476 (**74**) 1.ix.2011, det. KPБ — R. & B. Mearns *per* KAN
- 796 *Aroga velocella* (Zell.) — Rammamere Heath SP9230 (**24**) 24.viii.2011, male genitalia det. PRH — D.L. Wilton *per* MVA
- 799 *Neofriseria singula* (Staud.) — Rammamere Heath SP9229 (**24**) 11.vi.2011, male genitalia det. PRH — D.L. Wilton *per* MVA; Salhouse Broad TG3115 (**27**) 12.viii.2011, det. D. Hipperson — P. Heath *per* JRW
- 801 *Gelechia scotinella* H.-S. — Ledbury SO720365 (**36**) two at mv light 27.vii.2011, genitalia det. ANBS — MWH *per* ANBS
- 801a *G. senticetella* (Staud.) — Covingham SU1985 (**7**) 6.viii.2011. female genitalia det. D. Brotheridge — W. Clinch *per* EGS & MHS
- 806 *G. nigra* (Haw.) — Formby (National Trust) SD277082 (**59**) netted 21.vii.2011, genitalia det. SMP — R. Walker *per* SMP
- 815 *Scrobipalpa nitentella* (Fuchs) — Cresswell NZ302927 (**67**) larvae and tenanted mines on *Atriplex patula* 4.viii.2011 — A.J. Fairclough *per* TJT; Tramore saltmarsh S605008 (**H6**) 1.viii.2008, genitalia det. KGMB — TB
- 816 *S. obsoletella* (F. v. R.) — Greatmoor SP7022 (**24**) 28.vii.2011, male genitalia det. PRH — D.L. Wilton *per* MVA; Ellington Banks MOD SE2773 (**64**) 25.v.2011, male genitalia det. — CHF
- 818 *S. artemisiella* (F. v. R.) — Llanishen, Cardiff ST172822 (**41**) one at mv light 6.v.2011, genitalia det. — DJS, **New to Wales**
- 828 *Caryocolum viscariella* (Staint.n) — Llanfyllin SJ157210 (**47**) 11.viii.2011, genitalia det. ANG — M.D. Haigh *per* PRW
- 829 *C. marmoreum* (Haw.) — Portrack Marsh NZ4719 (66) 24.viii.2011, genitalia det. HEB, first confirmed VC record since at least 1900 — R. Woods *per* TJB
- 830 *C. fraternella* (Dougl.) — Peatlands Park H890604 (**H37**) 18.vii.2011, genitalia det. JC — K. Murphy *per* ER
- 832 *C. blandella* Dougl. — Charlton Kings SO9721 (**33**) 3.vi.2011, genitalia det. A. Prior — R. Ward *per* RGG
- 843 *Aproaerema anthyllidella* (Hübner) — South Glendale, South Uist NF791153 (**110**) 22.viii.2011, det. MRY — J. Kemp *per* MRY
- 844 *Syncopacma larseniella* (Gozm.) — Nansen Hill SZ5778 (**10**) 15.vii.2011, genitalia det. MJW — DTB & R. Wilson
- 849 *S. cinctella* (Clerck) — Winterset Country Park SE3715 (**63**) 14.vi.2011, genitalia det. HEB — P. Smith *per* HEB; Staveley NR SE3663 (**64**) 27.vi.2011, male genitalia det. CHF — CHF, J.C. Warwick & R. Evison

- 851 *Dichomeris alacella* (Zell.) — Carpenter's Farm SO777340 (**37**) 27.vii.2011, genitalia det. ANBS — M. Skirrow *per* ANBS
- 854 *Anacampis blattariella* (Hübner.) — Greystonelees NT958602 (**81**) 31.vii.2011, det. SMP — K. McCabe *per* MRY, **New to Scotland**
- 855 *Acompsia cinerella* (Cl.) — Llanellwedd Quarry SO047522 (**43**) 27.vii.2011, male genitalia det. PJC — PJC & VFC
- 856 *Anarsia spartiella* (Schr.) — Heathhall Plantation NY012778 (**72**) 31.vii.2011, genitalia det. KPB — R. & B. Mearns *per* KAN; Tahilla V736654 (**H1**) 2.viii.2011 — KGMB
- 866 *Brachmia blandella* (Fabr.) — Hutton Conyers SE3273 (**65**) 24.vii.2011 — CHF; Portrack Marsh NZ4719 (**66**) 3.vii.2011, genitalia det. HEB — R. Woods *per* TJB
- 867 *B. inornatella* (Dougl.) — Icklesham TQ888155 (**14**) 3.vi.2011, genitalia det. MSP — I. Hunter *per* MSP
- 868 *Helcystogramma rufescens* (Haw.) — Tahilla V736654 (**H1**) 2.viii.2011 — KGMB

AUTOSTICHIDAE

- 871a *Oegoconia caradjai* (Popescu-Gorg & Capuse) — Northampton, Far Cotton SP7458 (**32**) 23.vi.2011, genitalia det. DVM — M. Coles *per* DVM

BLASTOBASIDAE

- 873 *Blastobasis adustella* Wals. — Dornockbrow NY238652 (**72**) 15.vi.2011, det. MRY from photograph — B. Hammond *per* KAN

STATHMOPODIDAE

- 877 *Stathmopoda pedella* (Linn.) — Freshwater SZ332868 (**10**) 11.vii.2011, det. MJW — D. Cooke *per* MJW; Elkesley SK6975 (**56**) 21.vii.2011 — J.S. Denton, *BJENHS* **25**: 110

BATRACHEDRIAE

- 878 *Batrachedra praeangusta* (Haw.) — Bouldnor Copse SZ379901 (**10**) 23.vii.2011 — MCH, *Ent. Rec.* **124**: 160

MOMPHIDAE

- 880 *Mompha langiella* (Hübner.) — Bosherton Lily Ponds SR9794 (**45**) tenanted mines on *Circaea lutetiana* 26.ix.2011 — DJS *per* ADL
- 881 *M. terminella* (H. & W.) — Chicksands Wood TL1040 (**30**) mines on *Circaea lutetiana* 4.ix.2011 — AMB & MGB *per* DVM; Waresley Wood TL263545 (**31**) tenanted mines on *Circaea lutetiana* 9.ix.2011 — BD; Kelmars Estate, Scotland Wood SP7378 (**32**) 15.vi.2011, genitalia det. DVM — J. Skinner *per* DVM; Gortnamona W173684 (**H3**) tenanted mine on *Epilobium montanum* 4.ix.2011, det. JRL & J.C. Koster, previously unrecorded foodplant — JS; Glennagear Wood W648983 (**H5**) tenanted mine on *Circaea lutetiana* 13.viii.2011 — KGMB
- 883 *M. raschkiella* (Zell.) — Cork City (Sundays Well) W666720 (**H4**) two mines, one with larva, on *Chamerion angustifolium* 23.ix.2011 — KGMB
- 885 *M. conturbatella* (Hübner.) — Girley Bog N698702 (**H22**) 27.vi.2011 — EO'D, **New to Ireland**
- 887 *M. lacteella* (Steph.) — Treborth Botanic Gardens SH5571 (**49**) one at mv light 17.v.2011, det. DJS — N. Brown *per* DJS
- 888 *M. propinquella* (Staint.) — Claonaig NR8655 (**101**) 2.viii.2011, det. MRY — G. Hunter *per* MRY

- 889 *M. divisella* H.-S. — Bewdley SO776755 (**37**) 15.ix.2011, genitalia det. O. Wadsworth — I. Machin *per* ANBS; Birdlip Farm Bungalow SN395459 (**46**) 26.ii.2011, genitalia det. — ANBS
- 889a *M. bradleyi* Riedl — Weston Colley SU5039 (**12**) 19.v.2011, genitalia det. — D.G. Green *per* MJW; Dersingham (**28**) 30.ix.2011, genitalia det. — D. Jones, *Ent.Rec.* **124**: 101; Alsager SJ819545 (**58**) 30.ix.2011, genitalia det. — M. Dale *per* SHH; Flixton SJ741938 (**59**) indoors 5.v.2011, det. SMP — K. McCabe *per* SMP; Kirk Smeaton SE5216 (**63**) 28.xi.2011, genitalia det. HEB — D. Williamson *per* HEB
- 890 *M. jurassicella* (Frey) — Bullen Hill Farm ST894579 (**8**) 18.iii.2011, genitalia det. EGS — EGS & MHS; Sapcote SP490937 (**55**) 6.iv.2011, genitalia det. A.J. Mackay — G.E. Calow *per* APR; Heysham SD4059 (**60**) to blended bulb 4.ix.2011, genitalia det. SMP — J. Girdley *per* SMP

COSMOPTERIGIDAE

- 896b *Cosmopterix pulchrimella* Chambers — Tenby SN135004 (**45**) tenanted mines on *Parietaria judaica* 25.ix.2011 — DJS *per* ADL, **New to Wales**
- 897 *C. lienigiella* L. & Z. — Exminster Marshes SX960870 (**3**) 1.vi.2011 one at light — B. Bewsher *per* RJH; Icklesham TQ888155 (**14**) 15.v.2011, det. MSP — I. Hunter *per* MSP
- 897a *Anatrachyntis badia* (Hodges) — Putney TQ2374 (**17**) at mv light 1.x.2011, det. M.R. Honey & J.C. Koster
- 898 *Limnaecia phragmitella* Staint. — Stamullen O146662 (**H22**) 14.vii.2011 — EO'D
- 902 *Chrysoclista lathamella* Fletch. — Harlech dunes SH574302 and SH572313 (**48**) three moths beaten from *Salix cinerea* ssp. *oleifolia* at two localities 8.vi.2011 — H. Bantock *per* ANG
- 905 *Blastodacna hellerella* (Dup.) — St Cyrus NNR NO7463 (**91**) 26.vi.2011 — MRY
- 907 *Dystebenna stephensi* (Staint.) — Cowdray Park SU90592242 (**13**) 21.vi.2011 — G. Lyons *per* CRP
- 909 *Sorhagenia lophyrella* (Dougl.) — Ivinghoe Hills SP9616 (**24**) 3.vii.2011, male genitalia det. PRH — PRH & MVA

SCYTHRIDIDAE

- 911 *Scythris grandipennis* (Haworth, 1828) - Stoke Common SU9885 (**24**) 26.vi.2011, one male genitalia det. PRH — MVA
- 915 *S. picaepennis* (Haw.) — Nelsons Quarry SP44346418 (**38**) 11.vi.2011, male genitalia det. — M. Kennard *per* NJS; Les Blanchés Blanques, Jersey WV5649 (**113**) larva on *Lotus corniculatus* 7.vi.2011; north of St Ouen's Pond, Jersey WV5652 (**113**) several larvae on *Lotus corniculatus* 9.vi.2011, moth bred — RJH
- 920 *S. potentillella* (Zell.) — Richmond Park TQ195726 (**17**) 23.vii.2011, female genitalia det. B. Å. Bengtsson — C.M. Watts *per* GAC

TORTRICIDAE

- 924 *Hysterophora maculosana* (Haw.) — Black Point, Penmon SH6381 (**52**) three swept from bluebells 15.v.2011 — DJS
- 928 *Gynnidimorpha permixtana* ([D. & S.]) — Traigh na h-Uidhe, Isle of Harris NF981916 (**110**), one female 12.vi.2011, one male reared from *Pedicularis palustris* fruits collected 16.vi.2011, genitalia det. — BPH
- 930 *G. alimana* (Rag.) — Greatmoor SP7022 (**24**) 28.vii.2011, male genitalia det. PRH — D.L. Wilton *per* MVA

- 939 *Aethes tesserana* ([D. & S.]) — Broadholme SK896742 (**56**) 26.vi.2011 — MJG
- 940 *A. rutilana* (Hüb. n.) — Arkle NC3143 and NC3144 (**108**) spinnings on *Juniperus communis* ssp. *nana* locally common 14.v.2011, moths bred 22–29.v.2011. Second Scottish locality — RJH
- 949 *A. dilucidana* (Steph.) — Filby TG4713 (**27**) 25.vii.2011 — D. Hipperson *per* JRW
- 956 *Cochylidia implicitana* (Wocke) — Nevern Estuary Salt Marsh SN062395 (**45**) 6.v.2011, det. JRL from photograph — K. Meatyard *per* ADL
- 960 *Falseuncaria ruficiliana* (Haw.) — Dunnet Head ND203753 (**109**) 31.v.2011 — N. Money *per* MRY
- 962 *Cochylis roseana* (Haw.) — Llanelwedd Quarry SO047521 (**43**) 27.vii.2011 — PJC & VFC
- 964 *C. dubitana* (Hüb. n.) — Blackridge NS892694 (**84**) 29.vii.2011 — MGC
- 964a *C. molliculana* Zell. — Charlton Kings SO9721 (**33**) 5.viii.2011 — R. Ward *per* RGG; Ledbury SO7136 (**36**) 23.viii.2011 — MWH; Rhoose Point ST066660 (**41**) 29.v.2011 — A. Mantell *per* DJS, **New to Wales**
- 965 *C. hybridella* (Hüb. n.) — Llanymynech Rocks N.R. SJ265217 (**47**) 2.vii.2011 — PRW *et al.*
- 966 *C. atricapitana* (Steph.) — Connansknowe, Kirkton NX972821 (**72**) 21.iv.2011, det. KPB — R. & B. Mearns *per* KAN
- 968 *C. nana* (Haw.) — Cors Dyfi N.R. SN701985 (**47**) 19.v.2011, det. M.D. Haigh — M. Wagland *per* PRW; Kildarry NH7775 (**106**) 15.vi.2011, det. MRY — N. G. J. Richards *per* MRY
- 969 *Pandemis corylana* (Fabr.) — Lower Abercorn NT080789 (**84**) 4.vii.2011 — C. Convery *per* MGC
- 993 *Clepsis spectrana* (Treits.) — Langyards Wood NX998673 (**72**) 18.vi.2011 — A. Robertson *per* KAN; Eochdar, South Uist NF781463 (**110**) 28.vii.2011 — C. Johnson *per* MRY
- 994 *C. consimilana* (Hüb. n.) — Mersehead RSPB Reserve NX926559 (**73**) 4.vii.2011 — P. Higginson *per* KAN; Greystonelees NT958602 (**81**) 31.vii.2011 — K. McCabe *per* MRY
- 1000 *Ptycholoma lecheana* (Linn.) — Gormonston College O164664 (**H22**) 27.v.2011 — EO'D
- 1006 *Epagoge grotiana* (Fabr.) — Mersehead RSPB Reserve NX9255 (**73**) 18.vii.2011 — S. Morgan *per* KAN
- 1007 *Capua vulgana* (Fröl.) — Dundas Castle Estate NT122758 (**84**) 1.vi.2011 — MGC; Ballygarvaun F865072 (**H27**) 21.v.2011 — KGMB
- 1009 *Philedonides lunana* (Thunb.) — Berwyns SH9627 (**47**) many flying in midday sunshine 25.iii.2011, ANG & JEG *per* PRW
- 1010 *Ditula angustiorana* (Haw.) — Glencoe Visitor Centre NN112573 (**98**) 8.viii.2011 — D. Watson *per* MRY
- 1015 *Eulia ministrana* (Linn.) — Ffynnon Gynydd SO161409 (**43**) 1.v.2011 — PJC & VFC
- 1016 *Cnephasia longana* (Haw.) — Trinlaymire NT067752 (**84**) 11.ix.2011 — G. Fitchett *per* MGC
- 1018 *C. communana* (H.-S.) — Feckenham Wylde Moor SP01206056 (**37**) 17.v.2011, genitalia det. — M. Dale *per* ANBS
- 1022 *C. pasiuana* (Hüb. n.) — Glasbury SO180390 (**43**) 1.v.2011, male genitalia det. PJC — PJC & VFC

- 1022a *C. pumicana* (Zell.) — RAF Alconbury TL205782 (**31**) 14.vii.2011, genitalia det. — CWP *per* BD
- 1024 *C. incertana* (Treits.) — Airyolland Lodge, Luce Bay NX300473 (**74**) 4.vii.2011, genitalia det. SMP — K. McCabe *per* KAN
- 1025 *Tortricodes alternella* ([D. & S.]) — Inzievar Wood NT030881 (**85**) 11.ii.2011 — DWWD; Forres NJ038585 (**95**) 23.ii.2011, det. MRY — J. Hammond *per* MRY
- 1030 *Eana incanana* (Steph.) — Weeting TL7990 (**28**) 27.vi.2011 — JRW, JC, R. Jones & J. Swalwell
- 1039 *Acleris comariana* (L. & Z.) — Connansknowe, Kirkton NX972821 (**72**) 11.ix.2011, det. KPB — R. & B. Mearns *per* KAN
- 1044 *A. ferrugana* ([D. & S.]) — Carrickavrantry S555028 (**H6**) 2.ix.2011 — TB
- 1047 *A. schalleriana* (Linn.) — Sapcote SP490937 (55) 8.ii.2011, genitalia det. A.J. Mackay, first county record since VCH — G.E. Calow *per* APR
- 1051 *A. logiana* (Clerck) — Wellingborough SP8966 (**32**) 19.x.2011 — D. Larkin *per* DVM; Monk Wood SO804610 (**37**) 22.iv.2011, genitalia det. — P. Clement *per* ANBS; Sapcote SP490937 (**55**) 29.iii.2011, genitalia det. A.J. Mackay — G.E. Calow *per* APR
- 1052 *A. umbrana* (Hübner.) — Findon Valley TQ128077 (**13**) 22.x.2011, conf. MSP — M. Snelling *per* CRP
- 1053 *A. hastiana* (Linn.) — Garryarthur R711164 (**H8**) 19.iv.2011 — KGMB
- 1056 *A. lipsiana* ([D. & S.]) — Morrone Hill NJ18 (**92**) 10.iv.2011, genitalia det. MRY — P. Brooks *per* MRY
- 1057 *A. rufana* ([D. & S.]) — South Glendale, South Uist NF791153 (**110**) 23.iii.2011 — J. Kemp *per* MRY
- 1059 *A. abietana* (Hübner.) — Great Doward SO552150 (**36**) 26.iv.2008 — J. Rush *per* ANBS; Upper Rochford SO64446677 (**37**) 14.i.2011, genitalia det — D. Arnold *per* ANBS; Higher Poynton SJ945838 (**58**) 1.x.2011 — SHH; Glenlee NX609802 (**73**) 13.iv.2011, det. MRY from photograph — L. Ferguson *per* KAN; Garmony, Isle of Mull NM676393 (**103**) 9.iv.2011, det. MRY — A. Skeates *per* MRY; Tarvie NH422581 (**106**) 27.iii.2011, det. MRY — DWWD *per* MRY
- 1061 *A. literana* (Linn.) — Dersingham TF6929 (**28**) 2.iv.2011 — A. Drewitt *per* JRW; North Lodge, Glenlee NX609802 (**73**) 6.iv.2011, det. R. Leverton from photograph — L. Ferguson *per* KAN
- 1063 *Celypha striana* ([D. & S.]) — Airyolland Lodge, Luce Bay NX300473 (**74**) 5.vii.2011 — K. McCabe *per* KAN, **New to Scotland**
- 1070 *Olethreutes mygindiana* ([D. & S.]) — Berwyns SH966277 (**47**) larvae on *Vaccinium vitis-idaea*, reared, 25.iii.2011 — ANG & JEG *per* PRW
- 1073 *O. schulziana* (Fabr.) — nr Drum Ddu SH935164 (**47**) 29.vi.2011 — ANG *et al.* *per* PRW; Dogden Moss NT NT681496 (**81**) 1.vii.2011, det. MRY — I. Cowie *per* MRY; Coire an t-Sneachda NH988031 and NH995031 (96) several tubes with larvae on *Kalmia procumbens* (L.) formerly known as *Loiseleuria procumbens* (L.) 3.ix.2011, moth bred. Previously unrecorded foodplant — SDB & RJH
- 1074 *O. palustrana* (L. & Z.) — Gordon Moss SSSI NT631421 (**81**) 25.vi.2011, det. MRY — I. Cowie *per* MRY
- 1087 *Orthotaenia undulana* ([D. & S.]) — Girley Bog N698702 (**H22**) 27.vi.2011 — EO'D
- 1089 *Apotomis semifasciana* (Haw.) — Eskrigg NR, Lockerbie NY1280 (**72**) 16.vii.2011, det. MRY from photograph — P. Norman & J. Rae *per* KAN; South Glendale, South Uist NF791153 (**110**) 13.vii.2011, genitalia det. JC — J. Kemp *per* MRY; Girley Bog N698702 (**H22**) 9.vii.2011 — EO'D

- 1093 *A. betuletana* (Haw.) — Craignure, Isle of Mull NM153737 (**103**) 1.viii.2011, det. MRY — A. Skeates *per* MRY
- 1099 *Endothenia marginana* (Haw.) — Righ Bhealar NH010248 (**105**) 19.vi.2011 — BPH
- 1102 *E. nigricostana* (Haw.) — Bach Howey SO106428 (**43**) 6.vi.2011 — PJC & VFC
- 1106 *Lobesia reliquana* (Hübner) — Commins Coch SH845028 (**47**) 29.v.2011, det. M.D. Haigh — PRW
- 1110 *Bactra furfurana* (Haw.) — Cranmore SZ3990 (**10**) 31.vii.2011, det. MJW — I. Fletcher *per* MJW; Caerlaverock WWT NY0565 (**72**) 22.vii.2011, genitalia det. MRY — A. White & K. A. Naylor *per* KAN; Airyolland Lodge, Luce Bay NX300473 (**74**) 4.vii.2011, det. SMP — K. McCabe *per* KAN
- 1111a *B. lacteana* Caradja — Airyolland Lodge, Luce Bay NX300473 (**74**) 8.vii.2011, genitalia det. SMP — K. McCabe *per* KAN
- 1117 *Ancylis unguicella* (Linn.) — Cadnam Pond SU285157 (**8**) 28.v.2011 — D. brotheridge *per* EGS & MHS
- 1118 *A. uncella* ([D. & S.]) — Llangynidr SO1520 (**42**) 27.vi.2011 — JRL
- 1119 *A. geminana* (Don.) — Ystradgynlais SN7910 (**42**) vacated larval spinings on *Salix cinerea* 1.x.2011 — NRL & JRL
- 1121 *A. upupana* (Treits.) — Flitwick Moor TL0435 (**30**) 6.v.2011 — AMB & MGB *per* DVM
- 1123 *A. laetana* (Fab.) — East Winch TF6915 (**28**) 2.vi.2011, genitalia det. — JC *per* JRW; Aikyside Wood NT793609 (**81**) 19.viii.2011, det. MRY — B. Prater *per* MRY
- 1128 *A. myrtillana* (Treits.) — Byreclough Burn NT625588 (**81**) 13.v.2011, det. MRY — B. Prater *per* MRY
- 1132 *Epinotia subocellana* (Don.) — Middletown SJ305121 (**47**) 6.v.2011, det. M.D. Haigh — D. Boyes *per* PRW; Balrath N98864 (**H22**) 7.v.2011 — EO'D
- 1133 *E. bilunana* (Haw.) — Sundrum Castle NS403206 (**75**) 19.vi.2011, det. MRY — J. Davis *per* MRY; The Braes, Skye NG528338 (**104**) 18.vi.2011 — S Sexton *per* MRY
- 1135 *E. demarniana* (F. v. R.) — Hutton Conyers SE3273 (**65**) 17.v.2011 — CHF
- 1136 *E. immundana* (F. v. R.) — Ardgay NH601899 (**106**) 26.viii.2011, det. R. Leverton — M. Currie *per* MRY; Lough Gur R648412 (**H8**) 30.iv.2011 — KGMB
- 1143 *E. fraternana* (Haw.) — Maesteg, Garn Wen SS8492 (**41**) 26.iv.2011 — P. Parsons *per* DJS
- 1145 *E. nanana* (Treits.) — Swinton SD766001 (**59**) to MV light 3 & 27.vi.2011, genitalia det. SMP — G. Riley *per* SMP
- 1147 *E. cruciana* (Linn.) — Carsluith NX480562 (**73**) 25.vi.2011 — P. Robinson *per* KAN
- 1151 *E. trigonella* (Linn.) — Heathsfield Wood ND214742 (**109**) 1.ix.2011 — N. Money *per* MRY
- 1153 *E. sordidana* (Hübner) — Crosby Warren SE905126 (**54**) 21.vii.2011 — R. Woods *per* MJG
- 1154 *E. caprana* (Fabr.) — Biggleswade TL1944 (**30**) 20.vii.2011 — L. Burgess *per* DVM; Felindre Farchog SN100390 (45) 28.ix.2011, det. JRL from photograph, first county record since 1876 — J. Atkinson *per* ADL
- 1155 *E. brunnichana* (Linn.) — Burfa Bank Forestry SO2861 (**43**) 16.iv.2011, tenanted mine on *Betula* sp., moth bred — PJC & VFC
- 1158 *Rhopobota ustomaculana* (Curt.) — Kirroughtree NX451649 (**73**) 28.viii.2010, det. MRY — A. White, M. S. & J. Pollitt & L. Ferguson *per* KAN
- 1160 *Acrolita subsequana* (H. - S.) — La Corbière, Jersey WV552479 (**113**) larvae locally common on *Euphorbia portlandica* 7.vi.2011, moths bred — RJH

- 1163 *Zeiraphera ratzeburgiana* (Ratz.) — Witchy Cleugh NT798682 (**81**) 30.vii.2011, det. MRY — B. Prater *per* MRY
- 1166 *Z. griseana* (Hübner) — Kildarry NH7775 (**106**) 3.vii.2011, det. MRY — N. G. J. Richards *per* MRY
- 1168 *Gypsonoma sociana* (Haw.) — Llangynidr SO1520 (**42**) 29.v.2011 — JRL; Glenstockdale, Leswalt NX001611 (**74**) 1-30.vi.2011 — V. Harrison *per* KAN
- 1170 *G. oppressana* (Treits.) — Cwmdru SO1823 (**42**) 3.vi.2011 — C. Evans *per* NRL
- 1180 *Epiblema tetragonana* (Steph.) — Duartmore Burn NC178368 (**108**) larva in spun leaves of *Rosa canina* 15.v.2011, moth bred 10.vi.2011 — RJH
- 1182 *E. turbidana* (Treits.) — Bach Howey SO106428 (**43**) 6.vi.2011, male genitalia det. PJC — PJC & VFC
- 1183 *E. foenella* (Linn.) — Llanymynech Rocks N.R. SJ265217 (**47**) 2.vii.2011 — PRW *et al.*
- 1193 *Eucosma tripoliana* (Barr.) — Dornockbrow NY238652 (**72**) 9.vii.2011, det. MRY from photograph — B. Hammond *per* KAN; Ninch O151712 (**H22**) 29.vii.2011 — EO'D, **New to Scotland**
- 1196 *E. metzneriana* (Treits.) — Cookham SU8884 (**22**) 7.v.2011 — B. Clews *per* MCH; Cockayne Hatley (**30**) in RIS trap in week from 25.vi.2011 — I. Woiwod *per* DVM
- 1197 *E. campoliliana* ([D. & S.]) — Ocracuoy, Mainland, Shetland (**112**) 26.vii.2011 — JC, *Ent. Rec.* **124**: 102
- 1200a *E. parvulana* (Wilk.) — Stoke Common SU9885 (**24**) in malaise trap 8-15.vi.2011, female genitalia det. PRH — MVA; Barsalloch Point NX3441 (**74**) 9.vii.2011, genitalia det. KPB — R. & B. Mearns *per* KPB, **New to Scotland**
- 1202 *E. obumbratana* (L. & Z.) — Philip & Mary NX3244645603 (**74**) 9.vii.2011, det. KPB — R. & B. Mearns *per* KAN; St Sampson, Guernsey WV3381 (**113**) 22.vii.2011 — M.P. Lawlor *per* PDMC
- 1206 *Clavigesta sylvestrana* (Curt.) — Acle TG4010 (**27**) 5.viii.2011, genitalia det. JC — M. Greenland *per* JRW
- 1207a *Gravitarmata margarotana* (Hein.) — Clowes Wood (**15**) 1.v.2011 — F. Solly, **New to the British Isles**, *Atropos* **45**: 12-13
- 1209 *Pseudococcyx turionella* (Linn.) — Leeds SE3336 (**64**) 6.vi.2011 — J. Walshe *per* HEB
- 1209a *P. tessulatana* (Staud.) — Bridlington TA1867 (**61**) 30.viii.2011, det. HEB — L. Bruce *per* HEB, **New to the British Isles**, *Ent. Rec.* **124**, 64-66
- 1216 *Enarmonia formosana* (Scop.) — Llangynidr SO1520 (**42**) 29.v.2011 — JRL; Forres NJ038585 (**95**) 3.vi.2011, det. M. Taylor — J. Hammond *per* MRY
- 1225 *Pammene obscurana* (Steph.) — Dersingham TF6830 (**28**) 20.iv.2011, genitalia det. JC — R. Jones *per* JRW; Piper's Knowe Quarry NT879593 (**81**) 19.v.2011, det. MRY — B. Prater *per* MRY
- 1226 *P. agnotana* (Rebel) — East Walton TF7316 (**28**) 22.iv.2011, genitalia det. JC — JRW & R. Jones
- 1227 *P. giganteana* (Peyer) — Green Lane Wood ST8857 (**8**) 15.iii.2011, genitalia det. EGS — R. Beckett *per* EGS & MHS; Snettisham TF6834 (**28**) 1.iv.2011, det. JC — R. Evison *per* JRW
- 1229 *P. albuginana* (Guen.) — Cawston TG1323 (**27**) 29.v.2011, genitalia det. — JC *per* JRW; Weeting TL7990 (**28**) 04.vi.2011, Norfolk Moth Survey *per* JRW
- 1234 *P. regiana* (Zell.) — Glenlee NX609802 (**73**) 4.viii.2011 — L. Ferguson *per* KAN; Donollie Castle NM852231 (**98**) 17.v.2011 — C. Farmer *per* MRY

- 1236a *P. herrichiana* (Hein.) — Fulwood SD5332 (**60**) two to MV light below several mature *Fagus sylvatica* 10.v.2011 det. SMP — A. Powell *per* SMP
- 1238 *P. ochsenheimeriana* (L. & Z.) — Bishops Stortford TL4820 (20) 9.v.2011, genitalia det. R. Terry, first county record since 1901 — J. Fish & J. Reeves *per* CWP; Swinton SD766001 (**59**) to MV light vi.2011 — G Riley *per* SMP; Rathescar Wood O028869 (**H31**) 1.vi.2011 — DH, **New to Ireland**
- 1272 *P. aurana* (Fabr.) — Gormonston O177662 (**H22**) 14.vi.2011 — EO'D
- 1241 *Grapholita compositella* (Fabr.) — Nitshill NS518601 (**76**) 22.vi.2011, det. N. Gregory — R. Weddle *per* MRY
- 1245 *G. janthinana* (Dup.) — Mount Edgcumbe Country Park SX450525 (**2**) 21.vii.2011, det. LACT — J. Nicholls *per* LACT; Mornington O157756 (**H22**) 18.vi.2011 — EO'D
- 1247 *G. funebrana* (Treits.) — Auckley SE6500 (**63**) 25.vii.2011, genitalia det. HEB — S.R. Sowden *per* HEB; Whitley Bay NZ349723 (**67**) 3.viii.2011 — T.C. Sexton *per* TJT
- 1249 *G. lobarzewskii* (Nowicki) — Freshwater SZ3386 (**10**) 21.vi.2011, det. MJW — D. Cooke *per* MJW; Oakley Wood SP6111 (**24**) 1.vii.2010, male genitalia det. PRH — D.L. Wilton *per* MVA
- 1251 *G. jungiella* (Cl.) — Dromdeer East Plantation R646062 (**H5**) 8.iv.2011 — KGMB
- 1252 *G. lunulana* ([D. & S.]) — Boughrood Brest SO144386 (**43**) 19.v.2011, male genitalia det. PJC — PJC & VFC
- 1254 *Cydia strobilella* (Linn.) — Landguard TM284318 (**25**) 22.iv.2011, male genitalia det. JBH — N. Odin *per* JBH; Old Weston TL099774 (**31**) 23.iv.20, genitalia det. — K. Royles *per* BD
- 1256 *C. servillana* (Dup.) — Dersingham TF6929 (**28**) 10.v.2011 — A. Drewitt *per* JRW
- 1257 *C. nigricana* (Fabr.) — Airyolland Lodge, Luce Bay NX3047 (**74**) 3.vii.2011 — K. McCabe *per* KAN; Brackagh Moss J0251 (**H37**) 17.v.2011, genitalia det. BE — K. Murphy *per* ER
- 1260 *C. splendana* (Hübner) — Ninch O151712 (**H22**) 3.viii.2011 — EO'D
- 1263 *C. inquinatana* (Hübner) — Weston Park TG1017 (**27**) 25.vi.2011, genitalia det. — JC
- 1266a *C. illutana* (H.-S.) — Charnwood Lodge SK4615 (**55**) 3.vi.2011, genitalia det. — M.P. Skevington *per* APR
- 1267 *C. cosmophorana* (Treits.) — Charnwood Lodge SK4615 (**55**) 3.vi.2011, genitalia det. — M.P. Skevington *per* APR
- 1268 *C. coniferana* (Ratz.) — Evington SK641036 (**55**) 27.vii.2011 — A.J. Mackay *per* APR
- 1275 *Dichrorampha flavidorsana* Knaggs — Alnmouth NU2410 (**68**) 27.vii.2011, genitalia det. — SMP *per* TJT
- 1277 *D. senectana* Guen. — Coastal cliffs nr. Llwyngwriil SH575082 and SH576082 (**48**) 27.vi.2011 — ANG & JEG
- 1279 *D. acuminatana* (L. & Z.) — Dornockbrow NY238652 (**72**) 15.vi.2011, det. MRY from photograph — B. Hammond *per* KAN
- 1283 *D. montanana* (Dup.) — Llandrindod Wells SO064622 (**43**) 3.vii.2011, male genitalia det. VFC — PJC & VFC
- 1286 *D. sedatana* Busck — Turville Heath SU9174 (**24**) 11.vi.2011, male genitalia det. PRH — PRH & MVA
- 1287 *D. aeratana* (P. & M.) — Ardivachar, South Uist NF755440 (**110**) 20.vi.2011, genitalia det. — C. Johnson *per* MRY

EPERMENIIDAE

- 484 *Epermenia aequidentellus* (Hofm.) — Maes yr Haf, Newport SN05713896 (**45**) 24.vii.2011 — ADL

SCHRECKENSTEINIIDAE

- 485 *Schreckensteinia festaliella* (Hübner) — Llanhaylow Wood SO2256 (**43**) 23.iv.2011 — PJC, VFC & JRL

PYRALIDAE

- 1289 *Euchromius ocella* (Haw.) — Nunton, Benbecula (**110**) 18.iv.2011 — B. Dawson, *Atropos* **44**: 53-55
- 1294 *Crambus pascuella* (Linn.) — Lochwinnoch RSPB Reserve NS359581 (**76**) 17.vii.2011, det. A. Davis — M. McGinty *per* MRY
- 1297 *C. uliginosellus* Zell. — Greenwrae Flow NY332724 (**72**) 2.vii.2011 — P. Norman *per* KAN
- 1298 *C. ericella* (Hübner) — Loch Glascarnoch NH3272 (**106**) 20.vii.2011, det. MRY — M. Currie *per* MRY
- 1299 *C. hamella* (Thunb.) — Stoke Common SU9885 (**24**) 2.ix.2011, at least three — PRH & MVA
- 1305 *Agriphila tristella* ([D. & S.]) — Claonaig NR8655 (**101**) 2.viii.2011, det. MRY — G. Hunter *per* MRY
- 1317 *Catoptria verellus* (Zinck.) — Colyford SY2379392844 (**3**) 24.vii.2010 one at light — P. Vernon *per* RJH
- 1325 *Platytes alpinella* (Hübner) — Vermuyden TL389751 (**31**) 10.vii.2011, genitalia det. BD — D. Griffiths *per* BD
- 1332 *Scoparia subfusca* Haw. — Eyemouth NT941646 (**81**) 4.viii.2011, det. MRY — B. Prater *per* MRY
- 1333 *S. pyralella* ([D. & S.]) — Boat of Garten NH940184 (**95**) 26.vi.2011, det. MRY — M. Taylor *per* MRY
- 1335 *S. ancipitella* (La Harpe) — Clyde Muirshiel Country Park NS312632 (**76**) 30.vii.2011, det. A. Davis — N. Gergory *per* MRY
- 1340 *Eudonia truncicolella* (Staint.) — Greystonelees NT958602 (**81**) 31.vii.2011 — K. McCabe *per* MRY
- 1350 *Nymphula stagnata* (Dup.) — Cloan, nr Auchterarder NN963119 (**88**) 31.vii.2011 — J. Stoneman *per* MRY
- 1354 *Cataclysta lemnata* (Linn.) — Higher Downgate SX368724 (**2**) 4.viii.2011 — M.C.G. Atkinson *per* LACT; Cwm-y-wrach SO0034 (**42**) 31.vii.2011 — P. Bryan *per* NRL
- 1356 *Evergestis forficalis* (Linn.) — Thurso ND116681 (**109**) 3.vii.2011 — I. Outlaw *per* MRY
- 1360 *Hellula undalis* (Fabr.) — Mewslade SS4287 (**41**) 2.x.2011 — B. Stewart *per* DJS, **New to Wales**
- 1369 *Uresiphita gilvata* (Fabr.) — Carsfad, near Dalry (**73**) 15.x.2011 — J. Wormell & H. Ivatt *per* KAN
- 1375 *Ostrinia nubilalis* (Hübner) — Ledbury SO720365 (**36**) 9.vii.2010 — MWH *per* ANBS; Upper Rochford SO64396673 (**37**) 1.x.2011 — D. Arnold *per* ANBS
- 1376 *Eurrhynx hortulata* (Linn.) — Clochan NJ403608 (**94**) 14.vi.2011, det. R. Leverton — M. Cook *per* MRY; Claonaig NR8655 (**101**) 19.vi.2011, det. MRY — G. Hunter *per* MRY
- 1379 *Algedonia terrealis* (Treit.) — Kilmorack NH477441 (**96**) 16.vii.2011, det. MRY — J. Kemp *per* MRY
- 1380 *Phlyctaenia perlucidalis* (Hübner) — St Annes SD337278 (**60**) to MV light 26.vi.2011 — J. Wardle *per* SMP

- 1397a *Diplopseustis perieresalis* (Walker) — Biggleswade TL1944 (**30**) 3.viii.2011 — L. Burgess *per* DVM
- 1400 *Antigastra catalaunalis* (Dup.) — Middletown SJ305121 (**47**) 3.x.2011, det. PRW — D. Boyes *per* PRW, **New to Wales**
- 1401 *Maruca vitrata* (Fabr.) — Climping TQ0255401137 (**13**) 2.ix.2011 — T.H. Freed & M. Snelling *per* CRP
- 1403 *Diasemiopsis ramburialis* (Dup.) — Milton NX849706 (**73**) 4.x.2011 — A. White *per* KAN
- 1404 *Spoladea recurvalis* (Fabr.) — Holbury, Southampton SU4304 (**11**) 3.x.2011 — K.J. Plumridge *per* MJW; Holme TF7043 (**28**) 13.x.2011 — P. Clarke *per* JRW; Abberton SO9953 (**37**) 10.x.2011 — G. Peplow *per* ANBS; North Haven, Skomer Island SM735094 (**45**) 1.x.2011 — D. Boyle *per* ADL, **New to Wales**; Commins Coch SH845028 (**47**) 2.x.2011, det. M.D. Haigh — PRW; Trawscoed, Llanuwchllyn SH845326 (**48**) 2.x.2011 — ANG & JEG; Easington TA3918 (**61**) 4.x.2011 — M. Stoyle *per* HEB; Milton NX849706 (**73**) 1.x.2011 — A. White *per* KAN; Piper's Croft, Killiecrankie NN903636 (**89**) 1.x.2011 — J. Thorpe *per* MRY
- 1405 *Pleuroptya ruralis* (Scop.) — Dunollie House NM851931 (**98**) 2.vi.2011 — C. Farmer *per* MRY
- 1408 *Palpita vitrealis* (Rossi) — Stoke Prior SO950673 (**37**) 28.x.2011 — J. Rush *per* ANBS
- 1409a *Diaphania perspectalis* Walk. — Barnehurst TQ50297591 (**16**) 22.ix.2011 — T. Steele *per* DCG
- 1413 *Hypsopygia costalis* (Fabr.) — Airyolland Lodge, Luce Bay NX300473 (**74**) 8.vii.2011 — K. McCabe *per* KAN
- 1415 *Orthopygia glaucinalis* (Linn.) — Eyemouth NT941646 (**81**) 29.ix.2011, det. A. Davis — B. Prater *per* MRY
- 1426 *Achroia grisella* (Fabr.) — Commins Coch SH845028 (**47**) 2.x.2011, det. M.D. Haigh — PRW
- 1428 *Aphomia sociella* (Linn.) — Lochwinnoch RSPB Reserve NS359581 (**76**) 4.vii.2011 — M. McGinty *per* MRY
- 1433 *Cryptoblabes bistriga* (Haw.) — Eskrigg Nature Reserve, Lockerbie NY126806 (**72**) 16.vi.2011 — J. Rae *per* KAN
- 1438 *Trachycera suavella* (Zinck.) — Barnstaple SS596366 (**4**) 25.vii.2011 one at light — N.W. Cottle *per* RJH
- 1439 *T. advenella* (Zinck.) — Bute NS105639 (**100**) 29.vii.2011 — G. Collis *per* MRY
- 1441 *Oncocera semirubella* (Scop.) — Holme Fen TL198896 (**31**) 1.viii.2011, det. BD — M. Lovell and K. Royles *per* BD
- 1442 *Pempelia palumbella* ([D. & S.]) — Foel, Elan SN915645 (**43**) 2.ix.2011, det. PJC & VFC — S. Lewis *per* PJC & VFC
- 1445 *P. formosa* (Haw.) — Zeal Monachorum SS719039 (**4**) 2.vii.2011 one at light — SDB
- 1448a *Elegia fallax* (Staudinger) — Stubbington SU5503 (**11**) 24.iv.2011, genitalia det. RJD — D. Houghton *per* RJD, *Atropos* **44**: 41-42, **New to the British Isles**, but recorded in the Channel Islands in 2005
- 1451 *Pyla fusca* (Haw.) — Hill of Rattar ND244733 (**109**) 31.vii.2011 — N. Money *per* MRY
- 1451a *Etiella zinckenella* (Treits.) — Tincton SY7892 (**9**) 3.10.2011 — R. Cottle *per* PHS; Hutton Conyers SE3273 (**65**) 4.x.2011 — CHF
- 1452 *Phycita roborella* ([D. & S.]) — Tynemouth NZ364705 (**67**) 21.vii.2011 — TJT
- 1454a *Dioryctria schuetzeella* (Fuchs) — Weston Park TG1017 (**27**) 25.vi.2011, genitalia det. JC — Norfolk Moth Survey *per* JRW

- 1455 *D. simplicella* (Hein.) — Muir of Dinnet NNR NJ40 (**92**) 4.viii.2011 — MRY
- 1457 *Hypochalcia ahenella* ([D. & S.]) — Crosshill Quarry LWT reserve SD743432 (**59**) six to MV light 3.vi.2011 — G. Jones *per* SMP
- 1458 *Myelois circumvoluta* (Geoff.) — Chapel Finian NX279487 (**74**) 8.vii.2011, det. KPБ — R. & B. Mearns *per* KAN
- 1461 *Assara terebrella* (Zinck.) — Hay Wood SP21017126 (**38**) 5.viii.2011 — A. Prior *per* NJS
- 1473 *Ephestia elutella* (Hüb.) — Skelton NZ6518 (**62**) 6.v.2011, genitalia det. HEB — D. Money *per* HEB
- 1474 *E. parasitella* Staud. — North Ferriby TA0026 (**61**) 17.v.2011, genitalia det. HEB — I. Marshall *per* HEB
- 1478b *Vitula biviella* (Zell.) — Writtle College TL676067 (**19**) 25.vi.2011, genitalia det. — BG; Stoke Common SU9985 (**24**) 1.viii.2011, male genitalia det. PRH — MVA; Biggleswade TL2045 (**30**) 4.vii.2011 — S. Blain *per* DVM
- 1483 *Phycitodes binaevella* (Hüb.) — Staveley NR SE3663 (**64**) 27.vi.2011, male genitalia det. CHF — CHF, J.C. Warwick & R. Evison

PTEROPHORIDAE

- 1488 *Agdistis bennetii* (Curt.) — Farley SU2229 (**8**) 1.viii.2011, genitalia det. MFVC — D. Brotheridge *per* EGS & MHS
- 1491 *Crombrughia distans* (Zeller) — New Costessey TG1810 (**27**) 18.v.2011 — M. Casey *per* JRW
- 1492 *C. laetus* (Zell.) — Covingham SU1985 (**7**) 9.vii.2011, genitalia det. MFVC — W. Clinch *per* EGS & MHS; Cheltenham SO9520 (**33**) 30.vi.2011 — M. Hollands *per* RGG; Forest of Dean SO6210 (**34**) 2.vii.2011 — G.H.J. Meredith *per* RGG; Bishops Itchington, Bishops Hill SP39285818 (**38**) 15.vii.2011, female genitalia det. — A. Prior *per* NJS; Rhos yr Hafod, Elan SN910678 (**43**) 3.vii.2011, male genitalia det. PJC — PJC & VFC; Cwm Rhigian, Near Newport SN03523909 (**45**) 27.vi.2011 — North Pembs Moth Group *per* ADL; Derwgoed, nr. Bala SH973371 (**48**) 27.vi.2011, genitalia det. ANG, conf. C. Hart — GMT *per* ANG; Barsalloch Point NX345413 (**74**) 8.vii.2011, det. KPБ — R. & B. Mearns *per* KAN
- 1497 *Amblyptilia acanthadactyla* (Hüb.) — Ballygrogan W604867 (**H5**) 1.vii.2011 — KGMB
- 1501 *Platyptilia gonodactyla* ([D. & S.]) — Bowhousepark NY019655 (**72**) 29.ix.2011, det. C. Hart from photograph — A. Robertson *per* KAN
- 1502 *P. isodactylus* (Zell.) — Locks Park Farm, Hatherleigh SS5184022 (**4**) 1.vi.2011 — R. Wolton *per* RJH; Broubster ND001628 (**109**) 8.vii.2011 — M. Legg *per* MRY
- 1503 *Gillmeria ochrodactyla* ([D. & S.]) — The Lodge, RSPB, Sandy TL1947 (**30**) found dead indoors 11.vii.2011 — D. Buckingham *per* DVM
- 1504 *G. pallidactyla* (Haw.) — Marne Barracks SE2597 (**65**) 15.vii.2011, male genitalia det. CHF — CHF, J.C. Warwick & D.M. Bowes
- 1507 *Stenoptilia zophodactylus* (Dup.) — Anstruther NO563032 (**85**) 7.x.2011, det. CH — A-M. Smout *per* DWWD
- 1508 *S. bipunctidactyla* (Scop.) — Gordon Moss SSSI NT634421 (**81**) 25.vi.2011 — B. Prater *per* MRY; Applecross NG7145 (**105**) 24.vi.2011 — SMP
- 1508e *S. scabiodyctylus* (Gregson) — Malham Tarn Field Centre SD895673 (**64**) 13.vi.2011 — MRY; Bishop Middleham Quarry DWT Nature Reserve NZ3332 (**66**) 25.vi.2009, genitalia det. C. Hart — TJB & A.J. Wheeldon

- 1513 *Pterophorus pentadactyla* (Linn.) — Chapel Finian NX279487 (**74**) 2.vi.2011, det. KPB — R. & B. Mearns *per* KAN
- 1517 *Adaina microdactyla* (Hübner) — Nosterfield NR SE2779 (**65**) 13.viii.2011, det. CHF — D.M. Bowes, S.P. Worwood & P.V. Irving *per* CHF
- 1520 *Hellinsia osteodactylus* (Zell.) — Llanymynech Rocks N.R. SJ265217 (**47**) 2.vii.2011 — PRW *et al.*; Dalmeny Estate NT1478 (**84**) 2.viii.2010 — MGC
- 1523 *Oidaematophorus lithodactyla* (Treits.) — Ketton Quarry SK9705 (55) 25.vi.2011, first county record since VCH — APR & M.P. Skevington

Corrections

To the 2006 Review

- 1228a *Pammene ignorata* Kuzn. — detete (**33**) and substitute (**34**)

To the 2010 Review

- 1108 *Lobesia abscisana* (Doubld.) — the record from H6 was not new to Ireland
- 1245 *G. janthinana* — A.J. Wheeldon should be included with TJB as recorder
- 1253 *Grapholita orobana* (Treits.) — the specimen from Tramore Burrow (H6) was originally identified as *G. lunulana*, then re-identified as *orobana* and has now been re-identified as *lunulana* again.
- 1228a *Pammene ignorata* Kuzn. — for the VC 5 reference substitute Chedington Wood, Coal Pits Coppice ST49580743 and delete the VC 9 reference.
- 1309 *A. geniculea* (Haw.) — the recorder's name of A. Wheeldon should be changed to A.J. Wheeldon
- 1432 *Anerastia lotella* (Hübner) — the recorder's name of A. Wheeldon should be changed to A.J. Wheeldon

HAUSTELLATA

The Balfour-Browne Club, whose members are dedicated to the study of water beetles, have an unwanted copy of J. F. Stephens' *Haustellata*. This comprises four volumes, in good order, bound in green cloth with black Moroccan leather spine and four edge corners and gold-embossed red leather inserts on the spine. These are offered by the club for the knock-down price of £500 plus secure postage **to a private individual only**. Resale is strictly prohibited and the buyer agrees to be legally bound by this. Contact the Balfour-Browne Club at latissimus@btinternet.com. Income from the sale will be directed in its entirety to the running of the Balfour-Browne Club.

***Closterotomus trivialis* (A. Costa) arrives in Oxford and *Agnocoris reclairi* (Wagner) returns (Hem.: Miridae)**

In the late evening of 5 June 2011, I was making some routine enquiries along the River Cherwell, in New Marston Meadows, Oxford, beating the mature White Willows *Salix alba* which line the eastern bank. There was more than usual interest in my activities from members of the public, which included, on this occasion, the contents of a passing punt and I was growing a little weary of repeating my much rehearsed tutorial on practical entomology. However, on reaching a field boundary, opposite The Cherwell Boathouse (grid reference SP517079), I was rewarded with what looked, in the diminished light, like a very dark specimen of *Closterotomus fulvomaculatus* (De Geer), a species not uncommon on the deciduous trees in this area, but always a delight to see. With the night drawing in, I ended my evening's entertainment at that point and returned home. There, upon examining the insect properly, I discovered my initial identification was wrong. The insect was male and had charcoal-black hemelytra, with a pale stripe along the outer edge, looking very much like *Closterotomus trivialis*, albeit a teneral specimen, lacking the typical red cuneus. I put images of the bug on the *Flickr* website (<http://www.flickr.com>, photostream RobRyanBugs), and Dr. Tristan Bantock confirmed the insect's identity from the photographs.

This species was first found in Britain in a North London garden in 2008 (Bantock, *Het News*, Spring 2010, 15: 3). It was recorded again there, and in neighbouring gardens, in 2009 and 2010, and a second site was found in Battersea, South London (Bantock, *Het News*, Autumn 2010, 16: 9). The bugs were reported feeding on a range of garden plants. A search for other images on *Flickr* revealed that in the spring of 2011, several more locations for the insect had been found in West London, but none outside the London area. The Oxford sighting for this bug extends the known western range of this species by 70 km.

Over the next few weeks, I revisited the Cherwell banks of New Marston Meadows on several occasions and also patrolled the extensive flower beds of the nearby University Parks, but I failed to find any more examples of the bug. However, my efforts were not entirely in vain. Two days after my exciting discovery, I made another. Just 100m downstream of my original find, beating the foliage of a White Willow bough, I dislodged four specimens of *Agnocoris reclairi*, a species I had first recorded as new to Oxfordshire in 2006, and had not seen since 2007.

This capsid bug is red-brown in colour and about 5mm long. Southwood and Leston (1959. *Land and water bugs of the British Isles*, Warne, London) report it from only three counties – Suffolk, Cambridgeshire and Huntingdonshire – as a denizen of willows and sallows in fens and broad ditches. In the late 1980s, the insect was found at a gravel-worked site in Warwickshire (Lane, 1989. *Ent. Mon. Mag.*, 125: 36), and Kirby (1992, *A review of the scarce and threatened Hemiptera of Great Britain*. UK Nature Conservation No 2. Joint Nature Conservation Committee, Peterborough) adds Kent, Northamptonshire and Bedfordshire to its known

distribution, categorising the bug as Notable B. More recently, a single specimen was taken at Rye Harbour, East Sussex in 2005 (Hodge, 2006. *Brit. J. Ent. Nat. Hist.*, **19**: 190), and another in 2008 at Coombe Hill Canal Nature Reserve, East Gloucestershire (Widgery, *Het News*, Spring 2009, 13:10).

My own 2006 captures of the bug were at three different sites in Oxford. The first specimen was taken on 27 July on a patch of waste ground along Walton Well Road (SP 503074), between a railway line and the Oxford Canal. Later, on 30 July, 7 August and 18 August I found 12 more examples of the bug in University Parks (SP 518073) on the western bank of the River Cherwell, a short distance from my 2011 site. On 22 August, six more individuals were found at Headington Hill Park, Oxford (SP 528063), again close to the River Cherwell, about 1.5km downstream from University Parks. The following year, the insect seemed less numerous. I dislodged only two bugs in University Parks (on 18 August and 14 September) and a single bug at New Marston Meadows on 21 September. That was the last I saw of the species, until my captures in 2011.

Attempts to find more of the bug in 2011 were a failure, until 29 August, when I took my first specimen of the bug outside Oxford, about 10km to the west, at Stanton Harcourt (SP 414053) by beating a lichen-encrusted maple (*Acer* sp.). This location is about 2km from the River Thames, with many nearby water-filled gravel pits, so again the bug was found close to fresh water. It would be interesting to see how far along the Thames valley this species is now spread and how many new county records can be added to its known distribution. The River Thames itself divides Watsonian Oxfordshire and Berkshire.

Several excellent images of the bugs can be found either on the British Bugs website (<http://www.britishbugs.org.uk>) or by searching Flickr (<http://www.flickr.com>). — ROB RYAN, 38 St John Street, Oxford, OX1 2LH (E-mail: notnowcato@ymail.com).

Flight time of *Eriopygodes imbecilla* (Fabr.) (Lep.: Noctuidae) The Silurian

It is recorded by Bernard Skinner (Skinner & Wilson, 2009. *Colour Identification Guide to Moths of the British Isles*, Apollo Books) that *E. imbecilla* does not generally appear at MV light in its restricted Welsh habitats until at least 0200 hours GMT. This has been my experience as well as that of a number of collectors with whom I have discussed the matter. There is, of course, an afternoon flight in suitable weather conditions.

It may be of interest to note, therefore, that on 22 July 2012 in the Julier Pass, Graubünden, Switzerland, this species visited MV light from the moment it was switched on at 21.00 hours GMT and remained active throughout the night. It was still flying at first light when the trap was switched off and the temperature was 4°C. Earlier, on 22 July, several males had been noted flying actively in the afternoon sunshine and visiting flowers. This behaviour was repeated on 23 July.

The spot where the trap was run is at an altitude of about 2300 metres; the Welsh sites are situated at just under 600 metres. This species is found from Europe to the northern Pacific region and from medium high altitudes to Alpine areas, but in Southern and Central Europe it tends to occur in isolated higher mountain areas. It is interesting to speculate on how the behaviour of *imbecilla* has been modified at the edge of its range in Wales, because although the humid mid-mountain habitat is not out of the ordinary, the restricted flight time seems specialised. — TONY PICKLES, 2a Park Avenue, Lympington, Hampshire SO41 9GX (E-mail: ajpickles1@aol.com).

A British record of *Phyllocnistis citrella* Stainton, 1856 (Lep.: Phyllocnistidae)

Phyllocnistis citrella was first described by H. T. Stainton in 1856 on the basis of two specimens sent to him from Calcutta, India, and said by his correspondent Mr Atkinson to feed “on a species of Citrus” (Stainton, H. T., 1854-56. Descriptions of three species of Indian Micro-Lepidoptera. *Transactions of the Entomological Society of London*, n.s., 3). The life stages of the moth are beautifully illustrated on Plate 48 in T. Bainbrigge Fletcher (1920. *Life-histories of Indian insects: Microlepidoptera*, p. 171. Calcutta) – “this species occurs throughout India, Ceylon (and Burma?) and has also been recorded from Cape Colony, whither it was doubtless introduced with its foodplant”. The spread of *citrella* has since carried on apace and its world distribution pattern now matches that of commercial citrus production.

There are records of the early stages of the moth in Great Britain, including conspicuous vacated mines on the peel of imported fruit in Cheltenham in 2004 and 2006, and mines on citrus trees in garden centres in 2006 and 2008. However, these records are dwarfed by the 89 interceptions made by Plant Health and Seeds Inspectorate at British ports and airports between 1991 and March 2006, a total that included six instances of records of “insects” (British Leafminers website newsletter at <http://www.leafmines.co.uk/html/newsletter28.htm>). Despite these examples of adventive adults, *Phyllocnistis citrella* does not appear to have been added formally to the British species list. Both Karsholt & Razowski (1996. *The Lepidoptera of Europe: A distributional checklist*. Apollo Books) and Bradley (2000. *Checklist of Lepidoptera recorded from the British Isles (2nd edition)*. Privately published), list the species of *Phyllocnistis* alphabetically. A new checklist of British Lepidoptera is currently in preparation and so in the meantime it seems sensible to adhere to the alphabetic system and allocate to *Phyllocnistis citrella* the “Log Book” number 366b (the number 366a being taken already by *Cameraria ohridella*).

During a visit to a garden centre near Burford, Oxfordshire on 7 October 2012 I noticed a display of small citrus trees. Close examination revealed a number of

Phyllocnistis-like mines on the leaves – sinuous, narrow, silver tracks each with a very thin dark band of frass (Plate 34, Fig. 1). The mines were of two types (Plate 34, Figs 2 & 3). Some, on the lower leaves of the plants, were extensive and sufficiently old for parts of the upper surface of the mine to have started to flake off; there was also evidence of small pupation folds on the leaf edges adjoining these mines. On one other plant, a lemon tree, there were two very obvious upper-side mines on new growth, one tenanted and the other vacated with a leaf edge fold. This seemed like an excellent opportunity to attempt to investigate the development of the moth and I bought the plant; if nothing else, I imagined a house filled with citrus perfume.

On returning home I managed to photograph the larva in the tenanted mine just before it also pupated and I found another recently vacated mine on the underside of a new leaf and an example of one of the much older mines with the remains of a pupal case partially extruded from the leaf fold.

As *citrella* is a sub-tropical/tropical species, I assumed that heat would speed the process of pupation. However, dry, central-heating warmth is an effective way of killing a citrus plant, so I removed one of the leaves, placed it in a plastic container and put it in the airing cupboard. The leaf was inspected each morning for signs of development and the container was placed on a sunny window ledge when the weather allowed. On 21 October, I opened the container and found that a very active and very small moth had emerged – an adult of *Phyllocnistis citrella*. The other mined leaves were left on the plant until 29 October, when they were also potted and placed in the airing cupboard. Another adult had emerged by the morning of 30 October and the final specimen by the morning of 31 October. The last one had been damaged in the process of emergence and was dead in the pot.

In comparison with the four other British species of *Phyllocnistis*, the adults of *citrella* from the lemon tree (Plate 34, Fig. 4) were closest to *saligna* (Zeller) in terms of colouring and pattern, although a little smaller in size with a head to wing-tip length of 3mm. The longitudinal lines from the base of the costa show more definition in *citrella*, because of their dark colouring and contrast against the fuscous wash over much of the wings. The black dot at the base of the apical cilia appears larger than those in *saligna* and there is an additional streak from this dot more or less perpendicular to the costa.

The plant label on the tree from which the moths were reared specified a Dutch firm which specialises in ornamental citrus and the plant was clearly imported into the UK. It is not possible to state when during plant's journey the eggs were laid, although the existence of two generations of mines and a short pupation period of two weeks in warm conditions raises the intriguing possibility that the moths were breeding in Oxfordshire. Whatever the origins and after a long period waiting off stage in "interception", *Phyllocnistis citrella* can now be added to the list of British species. — ROBERT HOMAN, The Apiary, Swindon Lane, Cheltenham, Gloucestershire GL50 4PD (E-mail: theapiary.com).

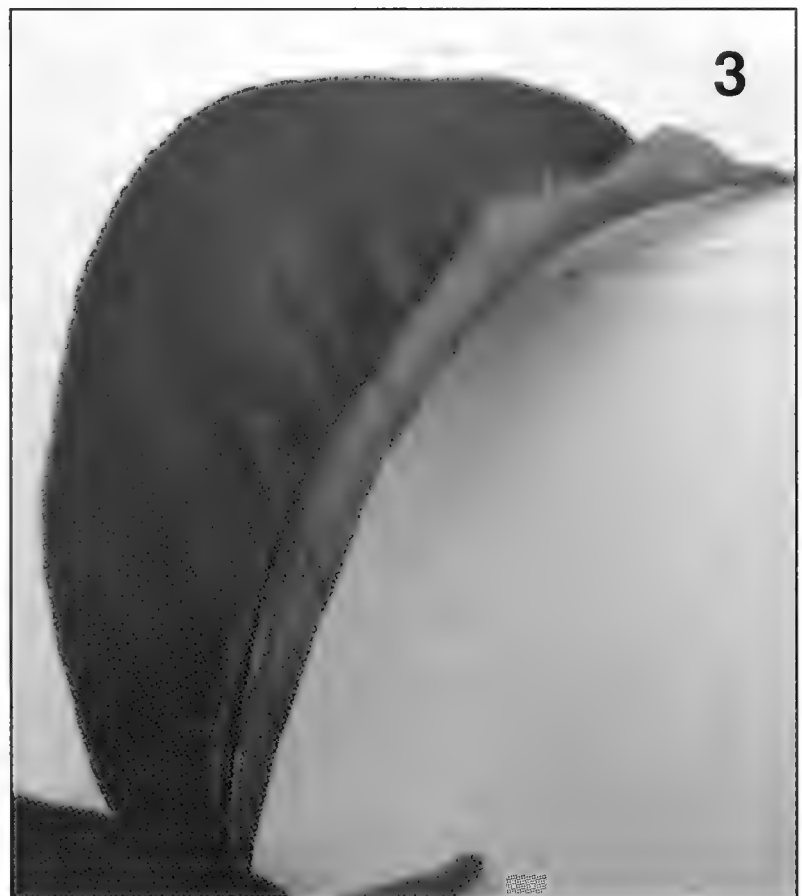
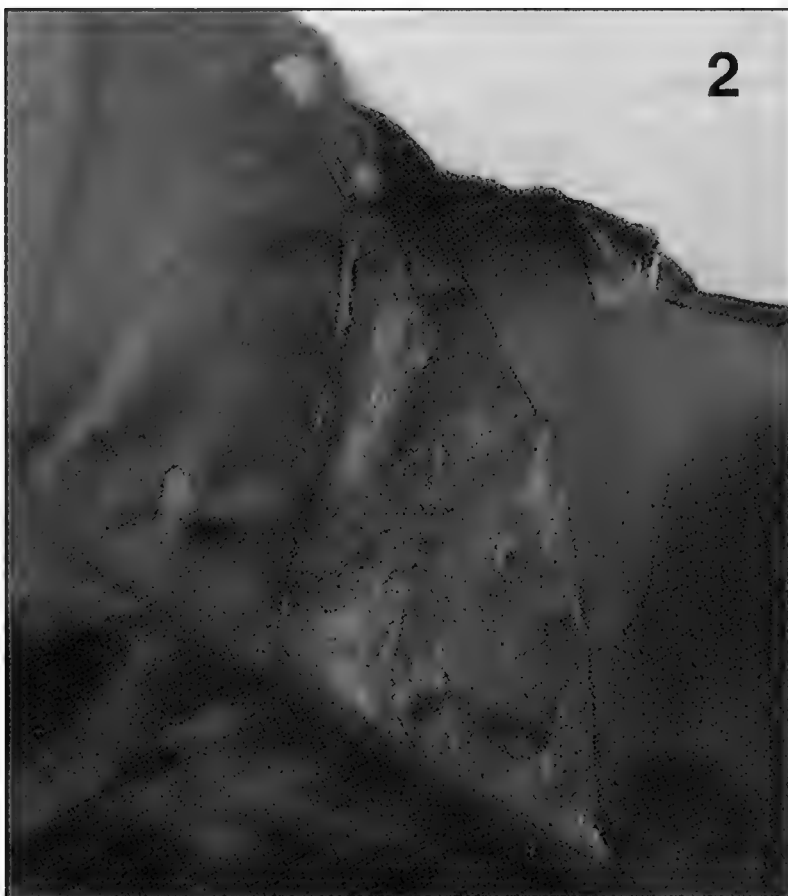
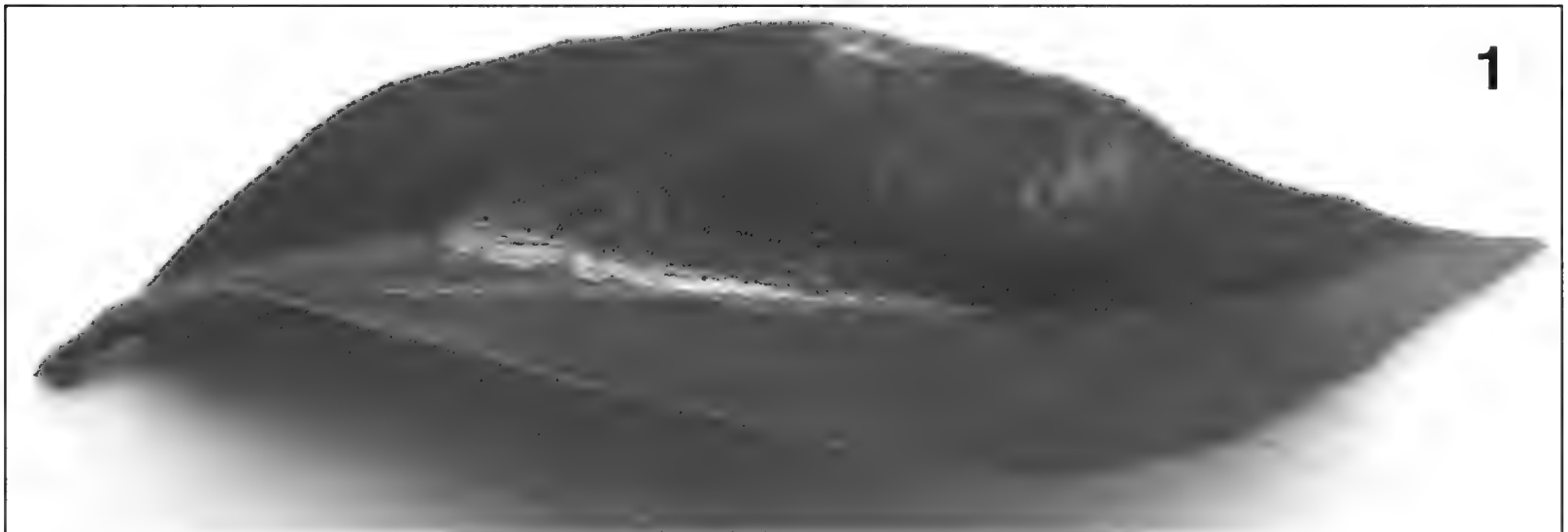


Plate 34. *Phyllocnistis citrella* stt.
1. Tenanted mine; 2. Old vacated mine on the underside of a leaf with the fold in which pupation took place on the leaf edge, October 2012; 3. Distorted Citrus leaf caused by the presence of 2 mines, picture taken after both adults emerged; 4. Adult, emerged from mine 21 October 2012.

**PAMMENE IGNORATA (KUZN.) (LEP.: TORTRICIDAE):
A NEW NORTHUMBERLAND (VC 67) RECORD**

T. J. TAMS

191 Links Road, Tynemouth, Northumberland NE30 3TQ.

Abstract

Pammene ignorata (Kuznetzov) (Tortricidae) is reported as a new species for South Northumberland. The two specimens collected in this vice-county in 2011 represent only the eleventh and twelfth British records to date and are the most northern reports for the country.

Keywords *Pammene ignorata* (Kuznetzov), genitalia, Northumberland, distribution.

Introduction

On 18 May 2011, M. S. Hodgson caught a small tortricoid moth (Plate 35, Fig. 1) at MV light at Eshott (South Farm), South Northumberland (VC 67; O.S. grid reference NZ 212978). Initial thoughts were that this was perhaps an example of *Epiblema cirsiiana* (Zeller), though it was not a perfect fit and judgment was temporarily suspended. Subsequently, on 20 June 2011, a second example (Plate 35, Fig. 2) was caught overnight in a Robinson MV trap (125W) in my garden at Tynemouth, South Northumberland (VC 67; O. S. grid reference NZ 363704). This too, I thought initially to be *Epiblema cirsiiana*, but given its size (wing span 14mm) and rather worn condition I decided to retain the specimen for examination at a later date. The specimen remained in a pot for over a year until August 2012, when I finally sent it to Jon Clifton in Norfolk for an opinion. Here it was relaxed and set as best as possible. After it was taken off the setting board and placed in the cabinet alongside *Epinotia cirsiiana* it was clear that it was not that species at all, but one of the *Pammene*, possibly *P. albuginana*. A genitalia dissection was carried out by Jon Clifton, who discovered that the moth is actually a specimen of *P. ignorata*. The valva (Plate 35, Fig. 3) has two prominent spines towards the base and the neck is also much narrower than in *P. albuginana*. A photograph of the genitalia slide was e-mailed to J. R. Langmaid and R. J. Heckford, who both agreed with that identification.

In the light of this, the Eshott specimen was re-examined and it was apparent that it, too, might be this species. Subsequently, an image of the Eshott moth was, through the kind agency of Dr Ole Karsholt, shown to tortricid specialist Knud Larsen, who responded as follows: "*It can only be Pammene ignorata. I have carefully examined the photos and compared them with material from E. cirsiiana, E. obscurana and E. tetragonana. E. tetragonana was the closest of the Epiblema species as it is rather dark and with less or no white areas at the outer half of the wing, but it is Pammene ignorata because: 1. The areas of leaden-coloured spots and stripes are dominant especially at the inner two thirds of the wing and they are also plenty in the outer third; 2. The white spot at dorsum is defined and clear white only with a weak dark shadow in the middle of the spot at dorsum; 3. The black stripes in the "mirror" are*

well defined and rather long; 4. The bright costal strigulae are diffuse and not pronounced; 5. The wing is a little broad and gently curved - not tipped; 6. The head is dark grey and not ochreous brown as in *tetragonana*. I have also compared the pictures with *Pammene insulana* which also comes rather close, but *insulana* has three vertical defined black stripes at the inner half of the wing and thus it cannot be this species.

Pammene ignorata is a provisionally designated as Nationally Vulnerable (pRDB2) in Davis (2012). These records represent the most northerly British report to date and is a significant geographical leap forward from previously known sites. It has been recorded from South Devon (VC 3), North Devon (VC 4), South Somerset (VC 5), Dorset (VC 9), East Gloucestershire (VC 33), West Gloucestershire (VC 34) and Cheshire (VC 58) as follows:

South Devon (VC 3): Furzeleigh, Axminster SY 312973, 23.vi.1986, E. C. Pelham-Clinton (1988. *Entomologist's Gazette* 39: 40).

West Gloucestershire (VC 34): Wetmoor, ST 7387, 29.v.2006, G. H. J. Meredith (Langmaid & Young, 2007, in which it is incorrectly stated to relate to VC 33); Wetmoor, ST 7387, 9.vii.2006, G. H. J. Meredith, (Langmaid & Young, 2007, in which it is incorrectly stated to relate to VC 33).

North Devon (VC 4): Zeal Monachorum, SS 719039, 12.vi.2007, Miss S. D. Beavan (Langmaid & Young, 2009).

Cheshire (VC58): Alsager, SJ 819545, 10.vi.2008, M. J. Dale, (Langmaid & Young, 2009).

East Gloucestershire (VC 33): Lineover Wood, SO 9818, 2.vi.2009, G. H. J. Meredith; Siccaridge Wood, SO 9303, 5.vi.2010, G. H. J. Meredith; Daneway SO9303 13.v.2011, G. H. J. Meredith.

South Somerset (VC 5): Chedington Wood, Coal Pits Coppice, ST 49580743, 2.vii.2010, J. McGill (Langmaid & Young, 2011, in which this record is erroneously duplicated for VC 9).

Dorset (VC 9): Bardolf Manor, Puddletown, SY 763952, 1.vii.2010, H. H. Wood (Langmaid & Young, 2011).

It is not clear if the Northumberland examples were local specimens or migrants, although no other immigrant activity was noted at the time of capture. It is also worth noting the food-plants of Lime (*Tilia*) and Elm (*Ulmus*) both occur near the trap sites.

Acknowledgements

Thanks to Jon Clifton for his help and assistance in the dissection and the initial identification and to J. R. Langmaid (Southsea, Hampshire), R. J Heckford (Plymouth, Devon) and Knud Larsen (Søborg, Copenhagen, Denmark) for confirmation of this record. Ole Karsholt (Copenhagen, Denmark) kindly passed the images of the Eshott adult to Knud Larsen. Finally, J. Bebbington, R. J. Heckford,

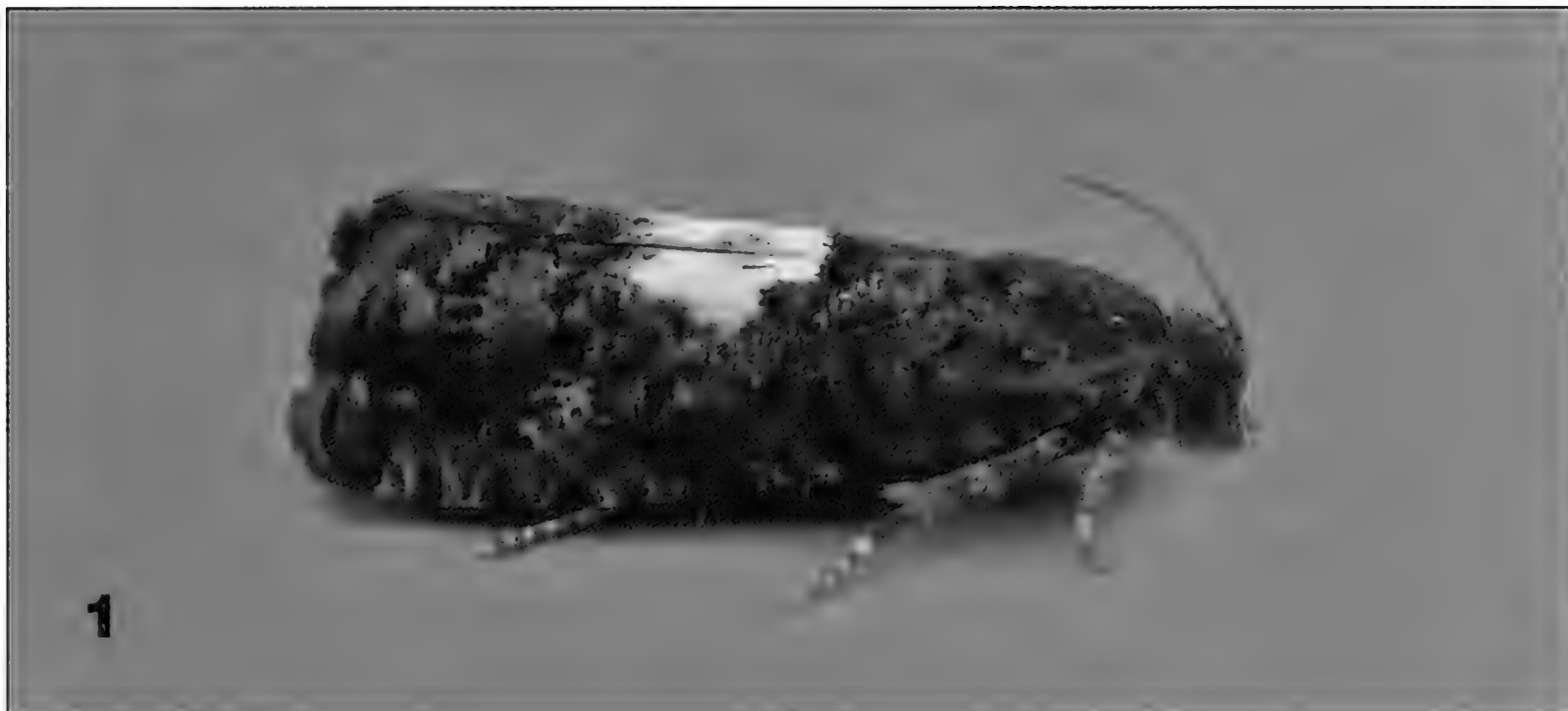


Plate 35. *Pammene ignorata* (Kuznetsov). Fig. 1. Eshott (South Farm), South Northumberland, 18.v.2011, Leg. M. S. Hodgson – adult moth. Figs. 2 & 3. Tynemouth, South Northumberland, 20.vi.2011, Leg. T. Tams – 1: adult moth, 2: male genitalia.

R. Gaunt, M. Hammond, S. Hind, J. A. McGill, G. Meredith and P. Sterling, are thanked for the clarification and information on the previous records.

References

- Davis, A. M., 2012. *A Review of the Status of Microlepidoptera in Britain*. Butterfly Conservation Report No. S12-02. Butterfly Conservation, Dorset.
- Langmaid, J. R. & Young, M. R., 2007. Microlepidoptera review of 2006. *Entomologist's Rec. J. Var.* **119**: 241-266.
- Langmaid, J. R. & Young, M. R., 2009. Microlepidoptera review of 2008. *Entomologist's Rec. J. Var.* **121**: 265-287.
- Langmaid, J. R. & Young, M. R., 2011. Microlepidoptera review of 2010. *Entomologist's Rec. J. Var.* **123**: 249-277.

Olive Crescent *Trisateles emortualis* (D. & S.) (Lep.: Noctuidae) colony discovered in Suffolk

As part of its regular field recording activities the Suffolk Moth Group visited Old Hall Wood on the evening of 29 June 2012 for some light trapping. The wood, just to the south of Ipswich, is privately owned, has a mixture of coniferous and deciduous trees and has produced some interesting species lists in the past. On this occasion the main item of interest was the recording at light of twelve Olive Crescent *Trisateles emortualis*, a species not previously thought to be resident in Suffolk.

The only other record that I am aware of for this species in Suffolk is a singleton from just east of Ipswich in 2005 by Neil Sherman. As the well-known colony of the moth at Stour Wood in North Essex is close to Suffolk the Suffolk Moth Group has previously made several attempts to find the species in the woods to the south of Ipswich. At the time all of these searches proved negative. Now, however, with twelve adults recorded in a single session, we suspect that there may be a resident colony of Olive Crescent in the wood.

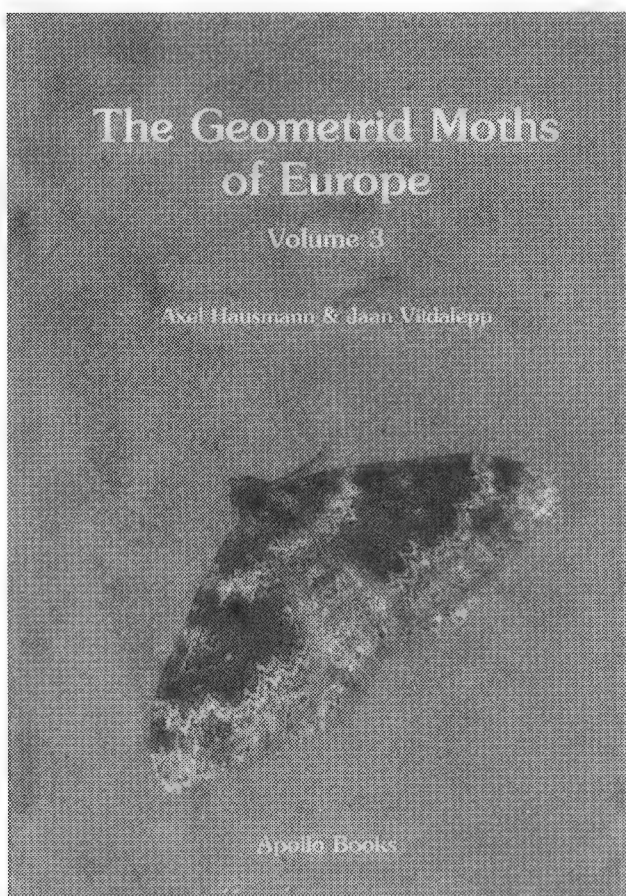
On 22 September 2012, Neil Sherman and I returned to the wood to look for larvae. Several were found by beating small branches and twigs with withered leaves over a beating tray. A brief search, curtailed by the rain, on the following day at nearby Great Martins Wood also found a couple of larvae of Olive Crescent. The following week a search of Dodnash Wood, quite close to Great Martins Wood, came up with just a single larva. Searches in some of the other woods in the area have so far proven negative.

This would seem to indicate that a resident, breeding population of the moth now exists in Suffolk; this has probably become established fairly recently. The moth group plans to continue monitoring the colony and surveying for new sites in future years.

I would like to thank Mark Parsons, Tony Davis, John Chainey and Jenny Spence for their help and advice on searching for the larvae.— TONY PRICHARD, 3 Powling Road, Ipswich, Suffolk IP3 9JR.

BOOK REVIEWS

The Geometrid Moths of Europe Volume 3, Larentiinae 1 by **Axel Hausmann & Jaan Viidalepp**. 743 pp., 25 colour plates, 240 x 170 mm., hardback, ISBN 87-88757-39-0. Published 2012. Series editor (volumes 1 – 6), Axel Hausmann. €169, from the publisher, Apollo Books, Aamosen 1, DK 5762 Vester Skerninge, Denmark, 2012 (apollobooks@vip.cybercity) or via your usual UK bookseller.



This eagerly anticipated fourth volume in the six volume series does not in any way disappoint – Apollo Books continue to maintain the ultra-high standards of scientific accuracy and publishing that we have come to expect from them. In this volume, 264 species of Larentiinae are treated (all except those in Eupitheciini and Perizomini). One new genus and one new species are described; 106 taxonomic changes are formally introduced. The four species in the genus *Lythria* are transferred to Sterrhinae.

We discover in the introductory chapters that the taxonomy of many species and species groups, notably in the genera *Scotopteryx*, *Xanthorhoe*, *Epirrhoe*, *Entephria*, *Colostygia*, *Coenotephria*, *Nebula*, *Epirrita*, *Aplocera*, *Chesias* and *Lithostege*, was found to be more challenging than expected, largely because of a lack of unambiguous genitalic characters. Indeed, none or very few inter-specific differences in genitalia

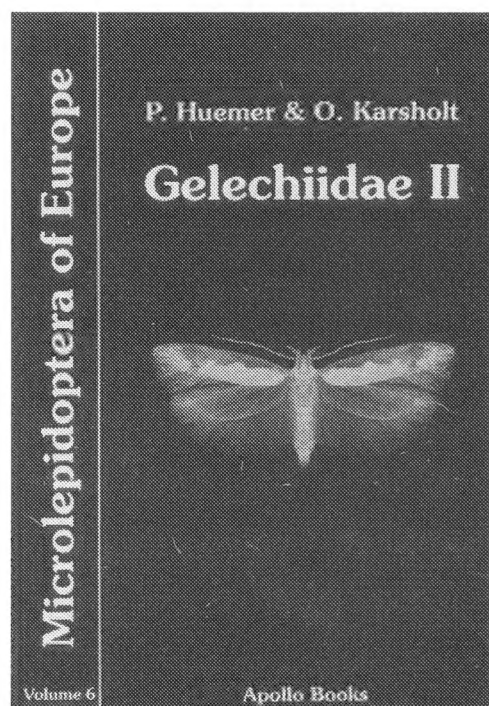
were found in the species pairs *Epirrhoe alternata/rivata*, *Thera variata/britannica*, *Operophtera brumata/fagata* and several non-British pairs. The book was necessarily delayed as the authors resorted to DNA bar-coding for answers. More than 3000 DNA barcodes were generated for 255 species. This has revealed one previously undetected (non-British) species plus the fact that that eleven taxa, forming five “pairs”, have identical bar codes suggesting that they are the same species (happily none affect the British list). Eight species share barcodes occasionally, partially and/or regionally and amongst these is the *Epirrita autumnata/filigrammaria* pair.

As expected, all the species are illustrated in colour by at least one example, usually more and the male and female genitalia are also presented, though these are presented as photographs rather than the crisp drawings of other volumes. The species are presented with their full name and reference to the original description, fully referenced junior synonyms, unavailable names (including misidentifications), diagnosis, distribution, phenology, biology including host-plants, habitat (with vertical distribution), parasitoids and differential features from similar species. Distribution maps for Europe and adjacent countries are provided.

With luck, there should just be time between reading this review and 25th December for letters to reach the North Pole! This volume is *essential* reading for anyone with any interest in the Geometridae and if Santa fails you, then I cannot think of any better consolation than buying your own copy in January (and whilst there, buy the other volumes too, before they go out of print).

Colin W. Plant

Microlepidoptera of Europe. Volume 6: Gelechiidae II (Gelechiinae: Gnorischemini) by P. Huemer and O. Karsholt. 586pp., 21pp. of colour plates depicting 211 species, 286 pages of monochrome photographs depicting male and female genitalia of all species, 47 text figures. 240 x 170 mm, hardbound, ISBN 978-87-88757-3. Published by Apollo Books, 2010. Available from the publisher at Apollo Books, Aamosen1, Ollerup, DK-5762 Vester Skerninge, Denmark. E-mail: info@apollobooks.dk; Website: www.apollobooks.com. €140 exclusive of postage.



This is volume 6 in the series “Microlepidoptera of Europe”, which started in 1996 and is the second on the Gelechiidae and covers the tribe Gnorischemini within the subfamily Gelechiinae (volume 3, by the same authors covered the Teleiodini and Gelechiini). Of the 211 European species described, 33 are currently on the British list comprising the genera *Scrobipalpa* (15 species), *Scrobipalpula* (2 species), *Gnorimoschema* (1 species), *Phthorimaea* (1 species), *Tuta* (1 species) and *Caryocolum* (13 species). Of these, only one, the adventive pest species *Tuta absoluta* (Meyrick) is not included in volume 4(2) of the Moths and Butterflies of Great Britain and Ireland. Fifteen species new to science are described for the first time and the work also incorporates an extensive taxonomic revision of the group.

The treatment of the species is consistent within the series and in this volume consists of an introduction, which includes collecting methods and genitalia preparation, followed by the classification of the Gelechiidae, and the biology, systematics and bionomics of the Gnorischemini, a key to European genera and a checklist. There then follows a systematic checklist, incorrect and doubtful species and a European distribution table. The systematic treatment of each species consists of a list of synonyms, a detailed description of the adult moth with notes on variation and similar species, descriptions of male and female genitalia, bionomics (life histories, food plants and behaviour of the early stages) and note on the European distribution. The illustrations consist of 21 photographic colour plates of set adults at a consistent magnification of x3 and monochrome photomicrographs of male and female genitalia of all the species described in the volume. The illustrations of male and female genitalia are grouped together so that allied species can be easily compared. In the males, the aedeagus is shown separately and the preparations follow the method first described by Linda Pitkin in 1984, whereby the membrane between the vinculum and the tegumen is cut and the genital armature “unrolled” to produce a flat mount. This removes the problem seen in genitalia slides of many of the Gelechiidae where there is a confusing superimposition of the two sides of this cylindrical structure, as depicted in the genitalia drawings in MBGBI vol. 4(2). That being said, such preparations require a steady hand and a fine pair of spring scissors! Mounts of the females show details of the 8th abdominal segment in the region of the ostium and the corpus bursa separately. Plates of imagines depict from two to fourteen specimens of each species and where necessary show a wide a range of variation. There is no key to species, just to genera based entirely on the genitalia of males and females separately.

The Gelechiidae is one of the most poorly studied families within the Lepidoptera and this volume includes two of the most difficult genera: *Scrobipalpa* and *Caryocolum* and these, with some exceptions really require dissection or rearing to confirm identity. Although rearing from the early stages is rewarding and educational, these insects are often encountered as worn material

from light trap catches or are netted near their food plants. Under "Collecting Methods" the book states "Identification of the Gnorischemini during field work is a difficult task and only advisable with long experience. Therefore, voucher specimens are frequently necessary to avoid misidentifications." – a sentiment with which I could not agree more. This volume is excellent, of a very high standard and contains much original academic research, but it is inevitably expensive at about £100 in the UK. It is taken as read that for experts on the microlepidoptera it is a "must have" but is it to be expected that lepidopterists that confine themselves to the British fauna would part with £100 for a volume that contains only 33 British species, particularly if they already have a copy of MBGBI vol. 4(2), and even with the possibility of identifying a species new to Britain? My answer to this is a qualified yes. Personally I prefer the photographic plates in this book for identification to the paintings in MBGBI vol. 4(2), excellent though these are. However, for this difficult group of microlepidoptera what distinguishes this particular book is the quality of the photographic plates of genitalia slide mounts, together with the associated diagnostic text and for me this makes it well worth buying.

Philip Jewess

ADDENDA ET CORRIGENDA

Volume 124 (current volume)

Pages 126-129: Unfortunately, part of Annex 2 of the review of immigrant Lepidoptera in the May issue (Part 3) appears to have been printed twice. Thus, text running from and including the main header on page 126 as far as the entire sub-heading for *Rhodometra sacraria* on page 129 repeats what has already appeared on pages 122-126. We apologise for any momentary confusion caused to readers and reassure them that the data presented are factually correct and that no text is missing.

Page 144: In the Table, the columns labelled "VC" contain administrative counties, not vice-counties. Thus, Whitecross Green Wood is in fact in the vice-county Buckinghamshire not Oxfordshire and Hitchcopse Pit is in the vice-county of Berkshire not Oxfordshire.

In Table 2 the phrases "1 unsexed" (third data row) and "9 unsexed" (fifth data row) that appear in the column labelled "Record" should have appeared in the preceding column, "No.", thus making the total number of records in that column 60, in agreement with the text of the article.

Page 210: In the Table, the header for the right-hand pair of columns repeats that for the left-hand pair – correctly, it should read "Cocoons on Grasses".

Volume 123 (2011)

Page 287. In the first paragraph, the locality "Windmill Hill, Bristol" is south of the River Avon and is therefore more correctly in VC 6, not VC 34.

THE ENTOMOLOGIST'S RECORD

AND JOURNAL OF VARIATION

World List abbreviation: *Entomologist's Rec. J. Var.*

<http://www.entrecord.com>

Published by the Amateur Entomologists' Society
UK Registered Charity number 2674302

Annual subscription for 2012 is £25 for individuals or £50 for institutional subscribers

Editor

C.W. PLANT, B.Sc., F.R.E.S., F.B.N.A.

14 West Road, Bishops Stortford, Hertfordshire CM23 3QP.

Telephone: 01279 507697 E-mail: cpauk1@ntlworld.com

Who to contact

Material for publication, books for review, obituaries, advertisements – the Editor
Subscriptions, change of address, etc – contact PO Box 8774, London SW7 5ZG
Late or non-arrivals, back issues – contact PO Box 8774, London SW7 5ZG

Back Issues

Volumes more than ten years old may be read at www.biodiversitylibrary.org/bibliography/8408

Readers are respectfully advised that the publication of material in this journal does not imply that the views and opinions expressed therein are shared by the Editor or by the Amateur Entomologists' Society or by any party other than the named author or authors.

Guidelines for Contributors

The Editor welcomes contributions on British Isles Lepidoptera, on non-British Lepidoptera where likely to be of interest to British researchers and on other groups of British Insects for which specialist English language journals do not currently exist. We accept descriptions of new species. Other subject matter may be accepted entirely at the discretion of the Editor, whose decision is final.

Please follow the format in this issue. The Editor will be pleased to assist in any way possible, especially if you are a first-time author. If in doubt – contact me! Ideally material will be compatible with Microsoft Word and will arrive via e-mail, but we will accept typescripts or *neatly* hand-written contributions for shorter Notes.

Notes are reviewed and accepted by the Editor and are especially welcomed. We aim to publish these within two issues of acceptance.

Full papers must include an Abstract and a maximum of ten Key Words and acceptance is subject to external peer-review; full papers may be returned for changes before final acceptance and we aim to publish these within three or four issues of original receipt.

Colour or black and white photographs are welcomed but will only be used if they are deemed relevant by the Editor. All pictures, as well as graphs and other objects created in Excel or other programs must be sent as separate files. This is because files embedded in Word documents cannot be edited.

We now issue Pdf files in place of paper reprints. These are sent automatically to the first named author of Papers. Authors of Notes may request a Pdf of their contribution. Abstracts of Papers are published on our website.

Books for review must be sent to the Editor in the first instance. We do not normally accept unsolicited reviews by third parties.

Data Protection Act, 1998

Subscribers' names, address, AES publications subscribed to and, where provided, e-mail addresses and telephone numbers, are stored on a computer database for the sole purpose of administering the publication and distribution of this journal. The information may be accessed by or sent to elected AES council members for AES business purposes, but will be used solely for the purposes of managing AES membership subscriptions and administering the Society. It will not be divulged to any third party without your permission except where the Society is legally obliged to do so. By subscribing to the *Entomologist's Record and Journal of Variation* you agree to these data storage conditions. If you object to us storing these data please let us know.



THE ENTOMOLOGIST'S RECORD AND JOURNAL OF VARIATION

<http://www.entrecord.com>

ISSN 0013-8916

Papers

- Microlepidoptera Review of 2010. *J.R. Langmaid and M.R. Young*. 249-276
Pammene ignorata (Kuzn.) (Lep.: Tortricidae): a new Northumberland (VC 67)
 record. *T. J. Tams*..... 282-285

Notes

- Closterotomus trivialis* (A. Costa) arrives in Oxford and *Agnocoris reclairei* (Wagner)
 returns (Hem.: Miridae). *Rob Ryan*..... 277-278
 Flight time of *Eriopygodes imbecilla* (Fabr.) (Lep.: Noctuidae) The Silurian. *Tony
 Pickles* 278-279
 A British record of *Phyllocnistis citrella* Stainton, 1856 (Lep.: Phyllocnistidae). *Robert
 Homan* 279-281
 Olice Crescent *Trisateles emortualis* (D. & S.) (Lep.: Noctuidae) colony discovered in
 Suffolk. *Tony Prichard*..... 285

Book Reviews

- The Geometrid Moths of Europe Volume 3, Larentiinae 1* 286
Microlepidoptera of Europe. Volume 6: Gelechiidae II (Gelechiinae: Gnorischemini.... 287-288

Addenda et Corrigenda

- Addenda et Corrigenda 288